

Exhibit to Agenda Item #9

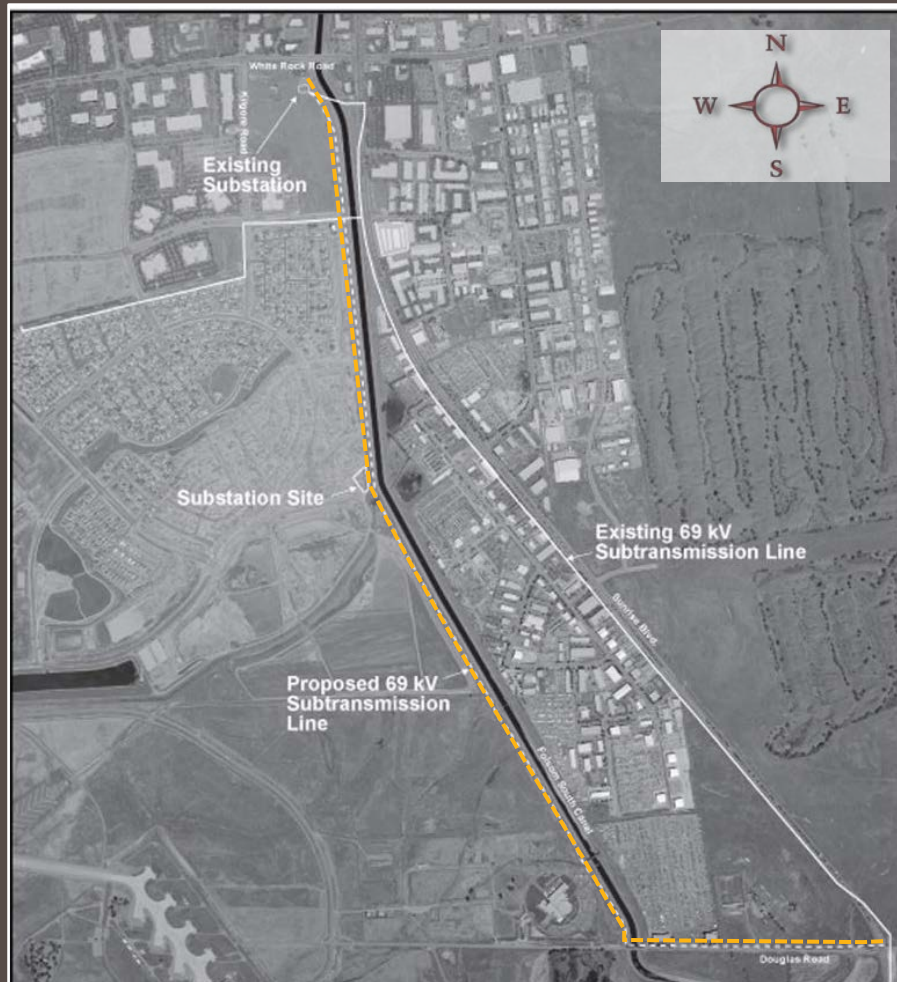
Adopt the **California Environmental Quality Act (CEQA) Final Subsequent Initial Study and Mitigated Negative Declaration (SIS/MND)** for the **Oselot-Baroque Substation and Line Project (Project)**; adopt the **Mitigation Monitoring and Reporting Program**; and approve the **Project**.

Board of Directors Meeting

Thursday, October 15, 2020, scheduled to begin at 5:30 p.m.

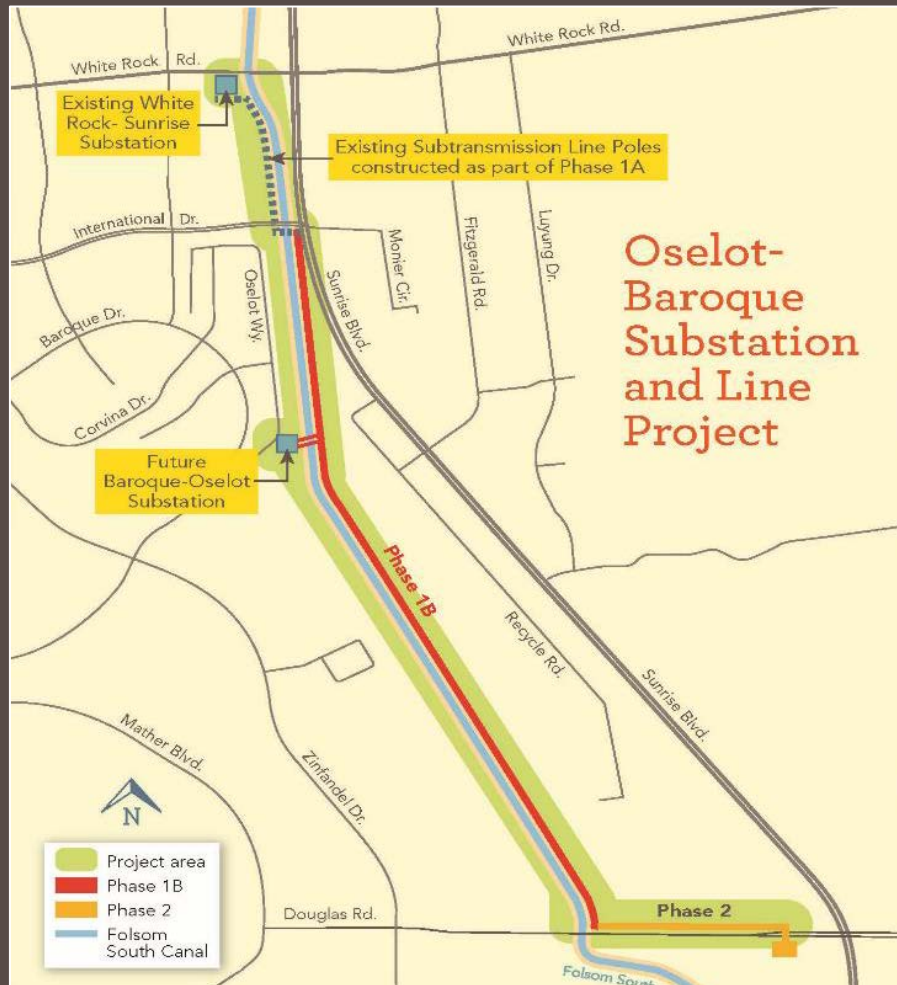
Virtual Meeting (online)

Oselot-Baroque Pole Line Project Background



- When the project was proposed in 2006, customers objected to having the line close to their homes on west side of Folsom South Canal
- After approval, the proposed line was relocated to address those concerns, but the project was put on hold due to economic downturn
- In 2020 a subsequent environmental document was produced to analyze the impacts of the modified design

Project Overview



- Phase 1A pole installation completed in 2018
 - 0.4 miles on west side of canal
- 2.4 miles of new power lines in 2 additional phases
 - **Phase 1B**: 1.9 miles along east side of canal, within Bureau of Reclamation-owned land
 - **Phase 2**: 0.5 mile along north side of Douglas Rd.
 - 45 steel poles
 - Construction timeline: Early 2021 to Early 2023

Project Benefits

- Help maintain dependable power to the neighborhood
- Move proposed power lines further away from residential properties on the west side of the Folsom South Canal
 - Increases the distance from approx. 45 ft. to 340 ft. from west side homes
 - Open space and industrial uses on east side are less affected by proximity



Environmental Analysis

- Prepared a Subsequent Initial Study and Draft Mitigated Negative Declaration (SIS/MND)
- Potentially significant impacts reduced to less-than-significant levels with mitigation measures related to:
 - Air Quality
 - Biological Resources
 - Cultural Resources
 - Hazards & Hazardous Materials
 - Land Use & Planning
 - Noise
 - Public Services
 - Tribal Cultural Resources

Public Review Process



Requested Action

1. Adopt the California Environmental Quality Act Subsequent Initial Study/Mitigated Negative Declaration for the Oselot-Baroque Substation and Line Project;
2. Adopt the Mitigation Monitoring and Reporting Plan for the Project; and
3. Approve the Project