



Oveja Ranch Solar Project

- The Project will provide enough zero carbon electricity to power more than 20,000 homes a year. That's the equivalent of taking more than 6,000 cars a year off the road.
- This will be an agrovoltaic project that optimizes the use of the land by generating clean energy while keeping the land in agricultural use.
- Construction's expected to support 230 jobs and contribute \$38 million in output to the local economy in Sacramento County.
- Once operational, Oveja Ranch is expected to contribute \$3.8 million in output to the local economy and \$11.7 million in output to the state economy each year.
- Additional statewide benefits include 580 jobs and \$123 million to the state economy during construction.

As a community-owned not-for-profit electric utility, we focus on providing carbon-free, affordable, reliable power to our customers. For decades, we've been a leader in clean energy and carbon reduction. Being good stewards of the environment means we care about the effects of climate change and are working to do our part to protect the land, air, water and wildlife.

As part of our efforts we're planning a solar and battery energy storage project connected to our electric grid — our Oveja Ranch Solar Project.

The Project will be on up to 400 acres of land in southeastern Sacramento County south of the city

of Rancho Cordova and north of Wilton. It includes construction and operation of a photovoltaic solar power and battery storage facility and interconnection facilities, including a generation substation and interconnection lines, that will provide up to 75 MW.

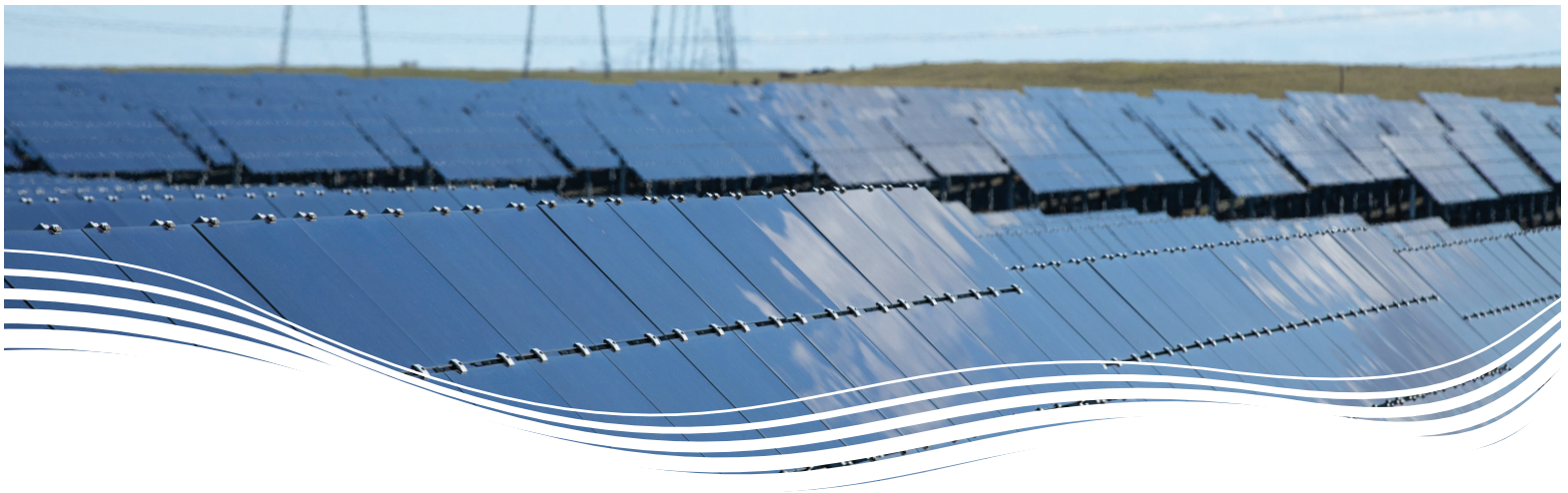
A key piece of the Project is the incorporation of agricultural practices, including irrigated pastures, sheep grazing and establishing pollinator habitat to enhance the land and benefit surrounding properties.

The power generated from Oveja Ranch is critical to our goal of achieving a carbon-free energy portfolio by 2030.



SMUD[®]

Sacramento Municipal Utility District



Timeline

Construction is expected to begin in 2026 with plans to be operational in 2028.

Community

We commit to working closely with stakeholders and residents to minimize any project impacts. We'll continue to support community efforts and events, as well as agriculture and conservation to benefit the region. We'll keep the community informed of important project updates and provide the opportunity for input throughout the project.

Our regional workforce development strategy aims to ensure all communities have access to job training, internships and pathways to careers needed to power our zero carbon future. We intend to maximize the percentage of local workforce used to develop this proposed project.

Stay informed

For regular updates, visit our Oveja Ranch Project website at smud.org/OvejaRanch.

Contact us

For more information, email OvejaRanch@smud.org.

