

Exhibit to Agenda Item #1

Discuss the monitoring report for **Strategic Direction SD-4, Reliability**

Board Policy Committee and Special SMUD Board of Directors Meeting

Wednesday, June 11, 2025, scheduled to begin at 6:00 p.m.

SMUD Headquarters Building, Auditorium

Agenda

- 2024 SD-4 annual monitoring report

SD-4, Reliability Policy

Meeting customer energy requirements is a core value of SMUD.

Therefore:

SMUD will ensure all customer energy requirements are met. This will be accomplished through the use of: (i) its generation resources and purchase power portfolio 100 percent of the time; and (ii) its transmission assets to ensure an overall availability of at least 99.99 percent.

SMUD will achieve distribution system reliability by:

Limiting the average frequency of outage per customer per year to:

- With major event : 0.99 – 1.33
- Excluding major event : 0.85 – 1.14

Limiting the average duration of outages per customer per year to:

- With major event: 67.5 – 93.3 minutes
- Excluding major event: 49.7 – 68.7 minutes

Ensuring that no individual circuits exceed these targets for more than two consecutive years. For circuits that exceed these targets for two consecutive years, a remedial action plan will be issued and completed within eighteen months.

SMUD will maintain the electric system in good repair and make the necessary upgrades to maintain load serving capability and meet regulatory standards.

SD-4, 2024 Reliability Results

Generation and Transmission System

Met customers' energy supply needs 100% of the time through a combination of SMUD generation and purchase power supplies

- Generation Asset and Gas Pipeline Availability
 - *Thermal Generation – 85.1%*
 - *Hydro Generation – 95.9%*
 - *Thermal Generation June through September – 97.7%*
 - *Hydro Generation June through September – 99.9%*
 - *At system peak, 50% of the generation was provided by internal resources and 50% was provided by purchased power*
- Overall availability of transmission system was 100%

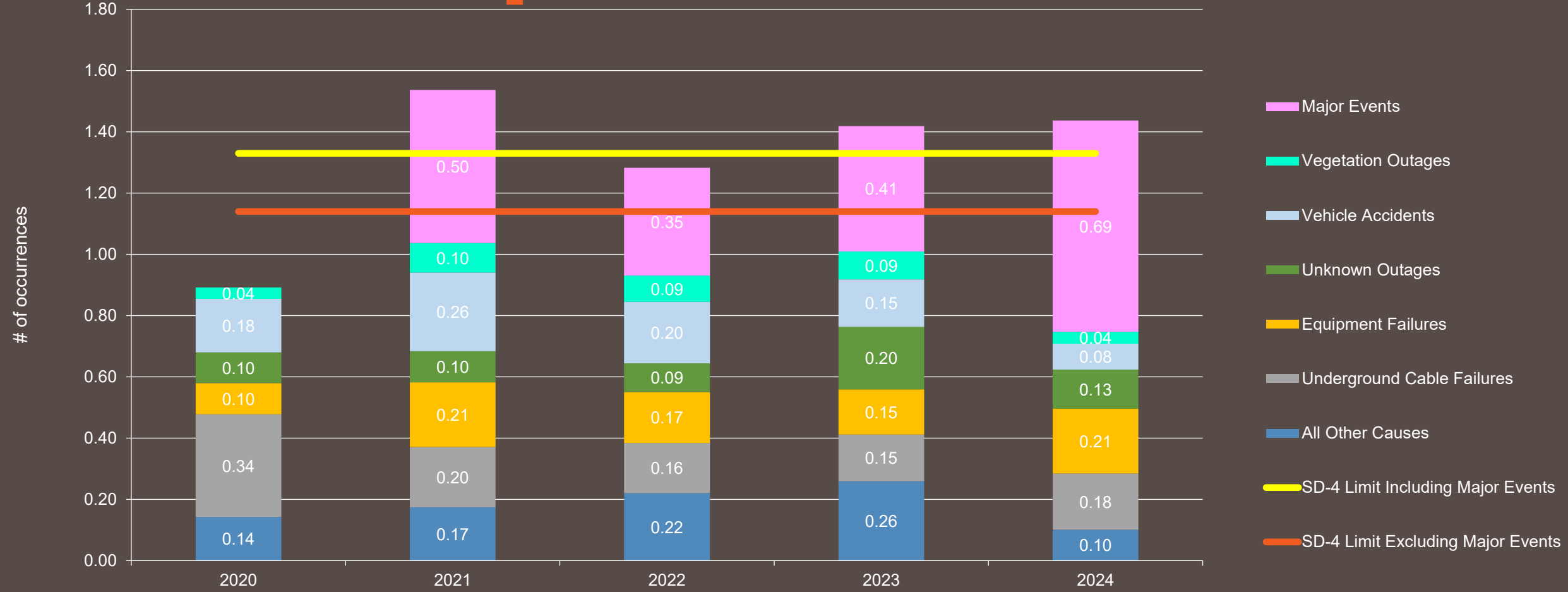
SD-4, 2024 Reliability Results

SMUD was in compliance for both SAIDI and SAIFI (excluding major events). Reliability targets including major events were exceeded for both SAIDI (228.0 minutes) as well as SAIFI (1.43).

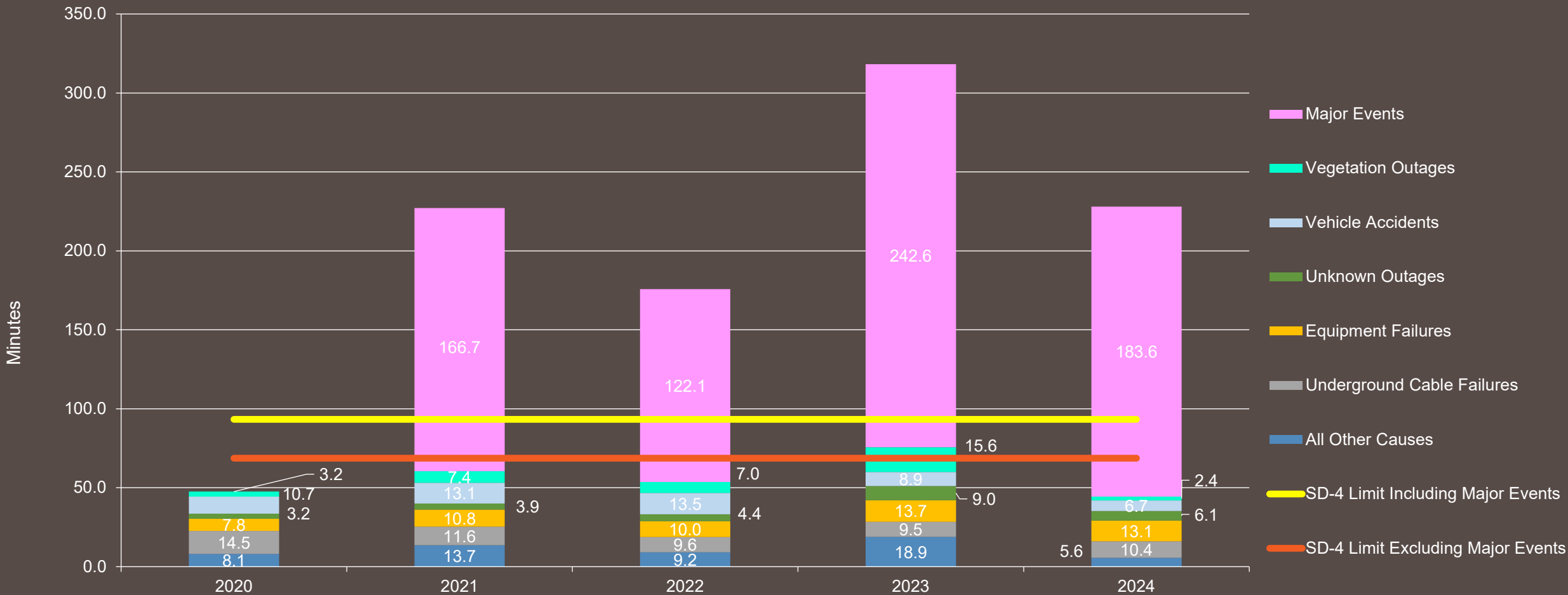
	With Major Events		Excluding Major Events	
	SD-4 Limit	2024 Results	SD-4 Limit	2024 Results
SAIFI [Average Outage Frequency]	1.33	1.43	1.14	0.75
SAIDI (minutes) [Average Outage Duration]	93.3	228.0	68.7	44.4

98.7% of all distribution circuits (773 circuits) met the reliability criteria

Outage Frequency (SAIFI) Performance Drivers Multi-Year Comparison



Outage Duration (SAIDI) Performance Drivers Multi-Year Comparison



2024 Worst Performing Circuits

- Ten circuits exceeded reliability limits for two or more consecutive years.
- Twenty-five projects were issued to improve reliability of the above ten circuits.
 - Thirteen projects have been completed.
 - Remaining twelve projects are in progress with most scheduled to be completed within the 18-month requirement.

Requested Action

Accept the 2024 SD-4 monitoring report

Questions

