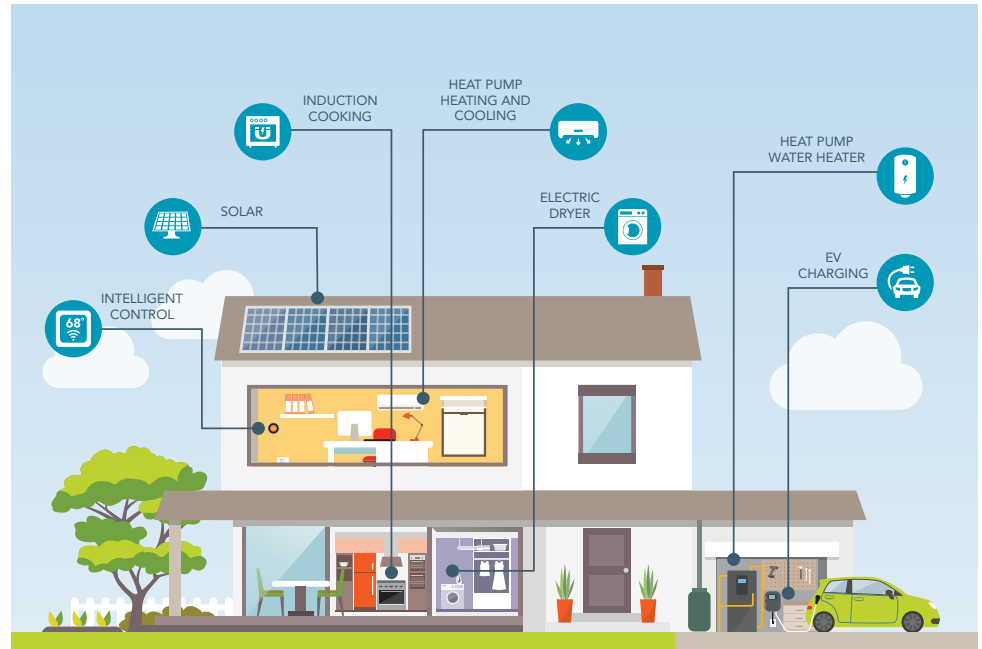


Building a Smart Home

Provide your homebuyers an energy-saving, carbon-reducing smart home. Our All-Electric Smart Homes program provides incentives for area developers to design and construct carbon reducing homes. Incentives are available for builders and homeowners.

Recommended advanced all-electric technologies



Benefits to builders

- Reduced utility interaction and infrastructure costs
- Increased placement flexibility of major home appliances
- Improved market appeal to sustainability-minded homebuyers
- No increase in construction costs
- Straightforward program requirements

Benefits to homebuyers

- Reduced energy bills and operating costs
- Eliminated or reduced natural gas costs and onsite fuel combustion
- Greater convenience, safety and control with use of efficient electric technology
- Environmental benefits of owning a home that emits up to 40% less greenhouse gasses per year – equivalent to reducing annual CO₂ emissions by over 1 ton – than an equivalent home powered by natural gas

Program overview

- Incentives are available for new homes and multifamily buildings built in SMUD service territory.
- Participating projects must meet minimum program requirements for all homes and multifamily units within the same project.
- Homes must have only electric-powered equipment and no other fuel connections.
- Builders must apply prior to beginning any drywall installation.
- A Home Energy Rating Systems (HERS) rater will be required to enter project verifications into the HERS registry for the compliance certificate.

Single family, all-electric incentives

Base incentive requires heat pump water and space heating, induction cooktop/stove and eligible smart thermostat.

Incentives				
Per unit Base incentive:	2024	2025	2026	2027
Market rate	\$3,000	\$3,000	\$2,500	\$2,500
Market rate in DAC/HTR	\$3,500	\$3,500	\$3,000	\$3,000
Affordable housing	\$3,750	\$3,750	\$3,125	\$3,125

ADU and Multifamily*, all-electric units

Base incentive requires heat pump water and space heating, induction cooktop/stove and eligible smart thermostat.

Incentives				
Per unit Base incentive:	2024	2025	2026	2027
Market rate	\$1,600	\$1,600	\$1,400	\$1,400
Market rate in DAC/HTR	\$1,950	\$1,950	\$1,750	\$1,750
Affordable housing	\$2,000	\$2,000	\$1,750	\$1,750

**Smart Homes offers a design stipend up to \$50,000 to affordable housing multifamily projects as well as an equipment incentive up to 75% of incremental cost of equipment. Ask your program representative for more information.*

Manufactured housing, all-electric units

Base incentive requires heat pump water and space heating, induction cooktop/stove and eligible smart thermostat.

Incentives				
Per unit Base incentive:	2024	2025	2026	2027
Market rate	\$5,500	\$5,500	\$5,000	\$5,000
Market rate in DAC/HTR	\$6,000	\$6,000	\$5,500	\$5,500
Affordable housing	\$6,875	\$6,875	\$6,250	\$6,250

Disadvantaged Community/Hard to Reach

Disadvantaged Community (DAC) or Hard to Reach (HTR) projects benefit a specific population group or designated area that faces significant barriers and challenges in terms of accessibility, engagement and inclusion in various social, economic and environmental initiatives or programs.

Ask your program representative to confirm whether your project is located in a region that qualifies as a DAC/HTR.

Affordable housing

To qualify for an affordable housing incentive, the project must be certified as affordable housing based on regulatory designation. Ask your program representative for more information.