

## Billing options

- **Budget Billing.** If you have higher winter or summer bills, you can request that your bills be divided into equal monthly payments, which are reassessed every four months.
- **Electronic Funds Transfer Program.** You can apply to have your bill payment deducted automatically from your checking account each month.
- **Online Payments.** Pay your bill online at [smud.org](http://smud.org). Click on "My Account" and then "Pay Bill" to view your bill and make payments directly from your bank account or using your credit card.

## Renewable energy options

- **Greenergy®.** For an additional \$3 or \$6 per month added to your bill, you can have 50% or 100% of your electric usage met with renewable resources like wind, water, solar and biomass.
- **SolarShares®.** Enjoy the benefits of solar power without having to buy or lease it. For a fixed monthly price based on your electricity usage, SolarShares will credit your monthly bill for solar power produced on a solar farm in our service area.
- **Community Solar®.** This program uses solar energy and solar installations to educate our community about the importance of renewable energy.
- **Net metering for renewable generation.** If you have qualifying renewable generation—such as a photovoltaic system—installed at your residence, this option is for you. The renewable generation supplies your household electricity needs, which in turn reduces the electricity supplied by SMUD. Intermittent excess energy produced by the renewable energy system is sent back to SMUD and is reflected as a credit on your bill.

## Other options

- **EnergyHELP.** With as little as a \$1 donation added to your monthly bill, you can help qualified, low-income families in financial crisis maintain electric service in their homes.
- **HomePower®.** SMUD offers homeowners (up to four-plexes) an optional service to cover unforeseen minor electrical repairs, up to \$500 per year. A charge of \$5.95 per month will be added to your bill.
- **Voluntary Peak Corps.** In exchange for bill credit, some customers allow SMUD to temporarily cycle off their central air conditioners during electrical system emergencies to help prevent power outages (June through September). The program is not accepting new subscribers.
- **Electric Vehicle (EV).** If you own or lease an electric vehicle, you can receive a discount for charging between midnight and 6 a.m. on our Time-of-Day Rate. Learn more at [smud.org/DriveElectric](http://smud.org/DriveElectric).
- **Master-Metered Rate.** This rate is for mobile home parks and eligible multi-family dwellings, which SMUD serves with a single master meter. Rate category: RSMM.
- **Three-Phase Power.** This service is available for an additional fee to residential customers with large electric loads, such as that of an elevator or commercial grade light industrial equipment.
- **Standby Service.** SMUD assesses an additional fee to provide backup/maintenance service for customers who operate their own generators. Solar, wind and biogas generators are exempt from this charge.

## Clear space

You must leave 8 feet of clearance in front of SMUD's green electrical boxes. This helps us work more efficiently, especially during a power outage. You may be charged if SMUD has to clear the space.

## Power theft

SMUD technicians encounter various methods of power theft each month. Unsafe conditions are a danger to all SMUD customers. Please report any unsafe situation you discover to SMUD.

## Choose your service and give us a call!

Customer Service.....1-888-742-7683

- *Bill inquiries, new service, pay station locations, residential products and services*
- *Energy efficiency products and services, EnergyHELP, Financing, Greenergy®, Low-Income, Medical Equipment Discount*
- *Home Energy Use Analysis, HomePower®, SolarShares®, Shade Trees, Peak Corps*

Power Outages .....1-888-456-7683  
24-hour service line

TDD Phone Service .....916-732-6630  
For the hearing impaired

Energy and  
Technology Center.....916-732-6738  
Educational seminars and workshops on  
energy-related topics and SMUD programs

[smud.org](http://smud.org)

®Registered service mark of Sacramento Municipal  
Utility District.

©SMUD 1809-17r



# 2018 Residential Rate Guide

Effective January 1, 2018

.....  
Helping you save money, energy  
and the environment.  
.....



Powering forward.  
Together.

501/18/RESBI  
30158-I-0201

## Your basic rates

As your community-owned and not-for-profit electric service provider, SMUD proudly offers a range of residential rate options that are priced among the lowest in California—averaging 32% lower than neighboring PG&E.

This brochure explains how we bill your electricity service, and summarizes the options available to you. The full text of SMUD's Rates, Rules and Regulations are available on our web site at [smud.org/Rates](http://smud.org/Rates) or at our Customer Service Center at 6301 S Street in Sacramento.

## Energy charges: the bulk of your bill

Most of the charges on your monthly bill will be for the electric energy you use, measured in kilowatt-hours (kWh).

## Other charges

Your monthly bill will also include a few other charges. Among them:

- **System Infrastructure Fixed Charge** of \$20.30, which helps to defray the expenses associated with billing, meters and other equipment that serve your home.
- **Taxes** from the State & some local municipalities.
- **Premium fees** for any special programs or services you may have chosen to participate in.
- **Discounts** that you may be eligible for as a participant in our low-income, medical equipment or air conditioning load management programs.
- **Solar Surcharge** for all energy rates, which was implemented to comply with the Senate Bill 1 (SB1) State solar requirements. The surcharge will end when surcharge revenues reach \$130 million.
- **Hydro Generation Surcharge** that adjusts annually, as needed, based on precipitation.

## Standard energy charges

SMUD offers seasonal electricity prices for all customers.

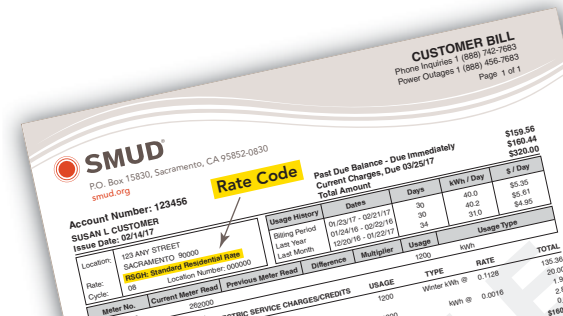
## Residential electricity prices by season (Dollars/kWh)\* (RSGH, RSEH, RWGH, RWEH, RSCH, RWCH)

Residential Rates Winter, Spring & Fall**	Residential Rates Summer**
\$0.1145/kWh	\$0.1310/kWh

\* Does not include solar or hydro generation surcharges.

\*\* Winter: Dec. 1 - March 31; Spring & Fall: April 1 - May 31 and Oct. 1 - Nov. 30; Summer: June 1 - Sept. 30.

*SMUD offers you energy-saving programs to help you manage your energy bills. Learn more at [smud.org](http://smud.org).*



## What rate are you on?

SMUD uses a simple code to identify your basic rate, your energy allowance option and your participation in any Residential Assistance Programs. The illustration to the left shows where to find your Rate Category on your bill. The table below illustrates Rate Category codes for the basic rate types and options.

## Examples of SMUD residential rate category codes

	Standard	Low-Income	Medical Equipment Discount	Domestic Water Well
Residential Rate Standard Rate With Heat Pump	RSGH	RSGH_E	RSGH_L	RWGH
Electric Space Heat (Closed)	RSEH	RSEH_E	RSEH_L	RWEH
	RSCH	RSCH_E	RSCH_L	RWCH

## Time-Of-Day Rate (TOD)

Beginning January 2018, customers with rooftop solar systems or plug-in electric vehicles can enroll in the Time-of-Day (5-8 p.m.) Rate. This is the standard residential rate for customers approved for solar installation after Dec. 31, 2017, and any customers moving into a home with existing solar.

The Time-of-Day (4-7 p.m.) Rate closed to new enrollments on Dec. 31, 2017. Solar customers on this rate can remain on it until Dec. 31, 2022. Customers with electric vehicles who are on this rate will be transitioned to the Time-of-Day (5-8 p.m.) Rate in 2019.

In 2019, the Time-of-Day (5-8 p.m.) Rate will be the standard rate for all residential customers. If you can shift your electricity use to times other than the 5-8 p.m. Peak period, you could save on your electricity bill. Learn more at [smud.org/TOD](http://smud.org/TOD).

## Residential assistance programs

SMUD offers low-income and medical equipment discount rates for qualifying households.

**Energy Assistance Program Rate (EAPR).** This discount is for low-income customers. Customers who qualify will receive a discount on all electricity usage in 2018. Maximum discount on energy use and System Infrastructure Fixed Charge is determined by household income.

**Medical Equipment Discount (MED) Rate.** Households with a full-time resident dependent on a qualifying electrically-powered medical device in the home may be eligible for a \$15-per-month MED Rate discount.

To apply for EAPR or MED, visit [smud.org](http://smud.org) or call 1-888-742-7683 for an application.

