

General Electric I-70

Single-phase analog meter

The familiar analog electric meter has served utility customers reliably and accurately for generations.

These non-communicating¹ meters have mostly been replaced since 2012 with 'Smart meters' that permit two-way communication between a customer's location and their electric utility.

We support individual choice in selecting a meter for your home. The chart below explains some of the differences.



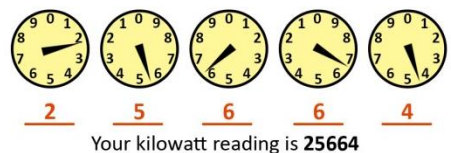
Comparing SMUD meters	Smart meter (digital)	Analog meter (non-communicating)
View your daily electricity use	Yes	No
Outage detection	Yes	No
Remotely connecting your service	Yes	No
Future benefits like energy alerts and programs using a home area network	Yes	No
Set-up fee	FREE	\$127.00 (monthly pmts avail.)
Monthly charge	FREE	\$14.00

Reading an analog electric meter

First, notice that each dial turns the opposite way from the one before it.

Starting with the dial on the right, record each number to get the current kilowatt hour reading.

Subtract from that the previous month's reading to get your current month's usage.



¹ "Non-communicating" – Does not transmit meter data between the customer and the utility.