



- The Curry Creek Solar Project will provide enough zero carbon electricity to power more than 40,000 homes a year. That's the equivalent of taking more than 12,000 cars a year off the road.
- Construction is expected to contribute more than \$58 million to the local economy and support more than 400 jobs in Placer County during the construction phase.
- Once operational, Country Acres is expected to contribute \$1.4 million to the local economy and \$3.4 million in economic value to the state each year.
- Additional statewide benefits include more than 1,000 job opportunities and \$165 million to the state economy during construction.

Curry Creek Solar Project

As a community-owned, not-for-profit electric utility, we focus on providing carbon-free, affordable, reliable power to our customers. For decades, we've been a leader in clean energy and carbon reduction. Being good stewards of the environment means we care about the effects of climate change and are working to do our part to protect the land, air, water and wildlife.

As part of our efforts, we're planning a solar and battery energy storage project connected to our electric grid - Curry Creek Solar Project.

The Project will be on up to 680 acres of land in southwestern Placer County just west of the City of Roseville. It includes construction and operation

of a photovoltaic (PV) solar power and battery storage facility and interconnection facilities, including a generation substation and interconnection lines, that will provide renewable power production capacity of up to 156 megawatts (MW).

Key pieces of the Project include the incorporation of agricultural practices like grazing sheep and pollinator habitat to enhance the use of the land and benefit surrounding properties.

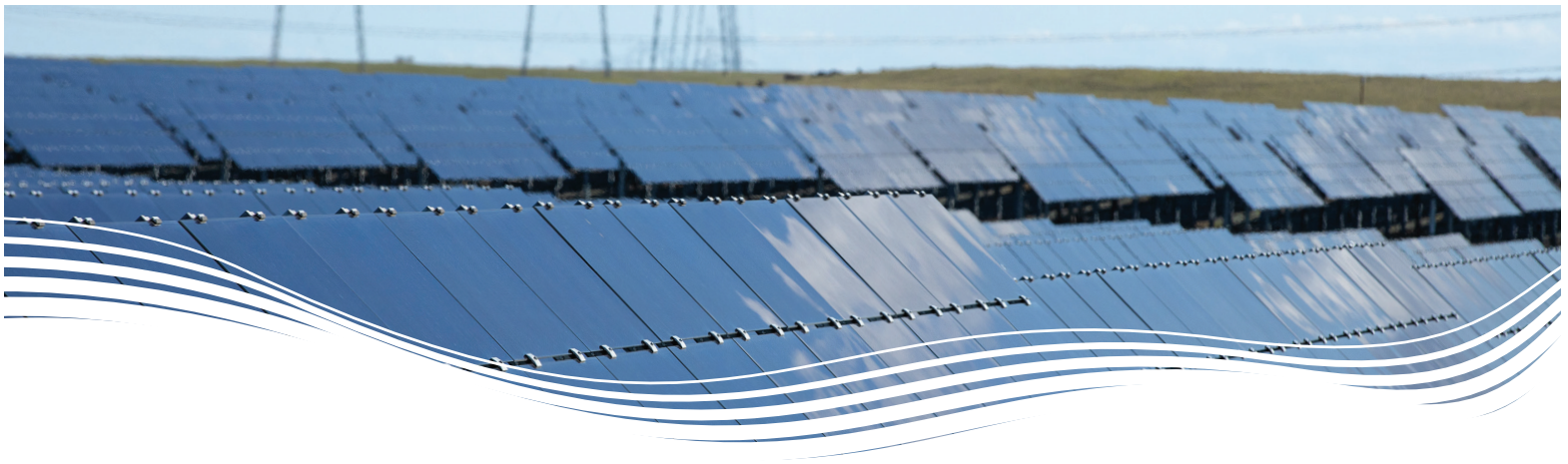
There will also be a heavy focus to engage and employ a local workforce to build and support Curry Creek.

The power generated from Curry Creek is critical to our goal of achieving a carbon-free energy portfolio by 2030.



SMUD®

Sacramento Municipal Utility District



Timeline

Construction is expected to begin in 2027 with plans to be operational in late 2028.

Community

We're a longstanding member of the Placer County community with more than 2,900 customers in the area. We're committed to working closely with stakeholders and residents to minimize any project impacts. As members of the local Chamber of Commerce, we'll continue to support community efforts and events, as well as agriculture and conservation to benefit the region. We'll keep the community informed of important project updates, hold community meetings and provide the opportunity for input throughout the project development.

Stay informed

We'll provide ongoing updates at smud.org/CurryCreek.

Contact us

For more information, call **916-732-4934** or email CurryCreekSolar@smud.org.

