

Exhibit to Agenda Item #1

Brief the Board on SMUD's Community Impact Plan.

Board Energy Resources & Customer Services Committee and Special SMUD
Board of Directors Meeting

Wednesday, August 20, 2025, scheduled to begin at 6:00 p.m.

SMUD Headquarters Building, Auditorium

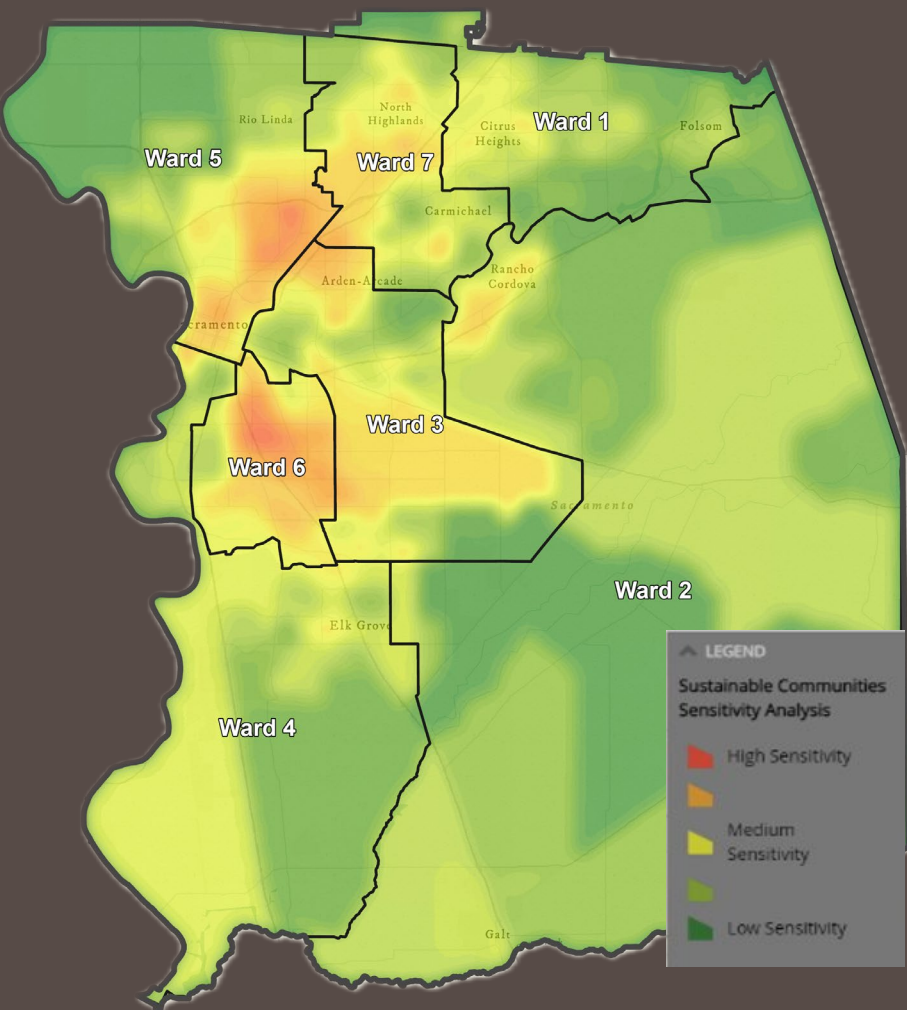
Community Impact Plan

Ensuring No Community is Left Behind.



Community Impact Plan

Ensuring No Community is Left Behind.



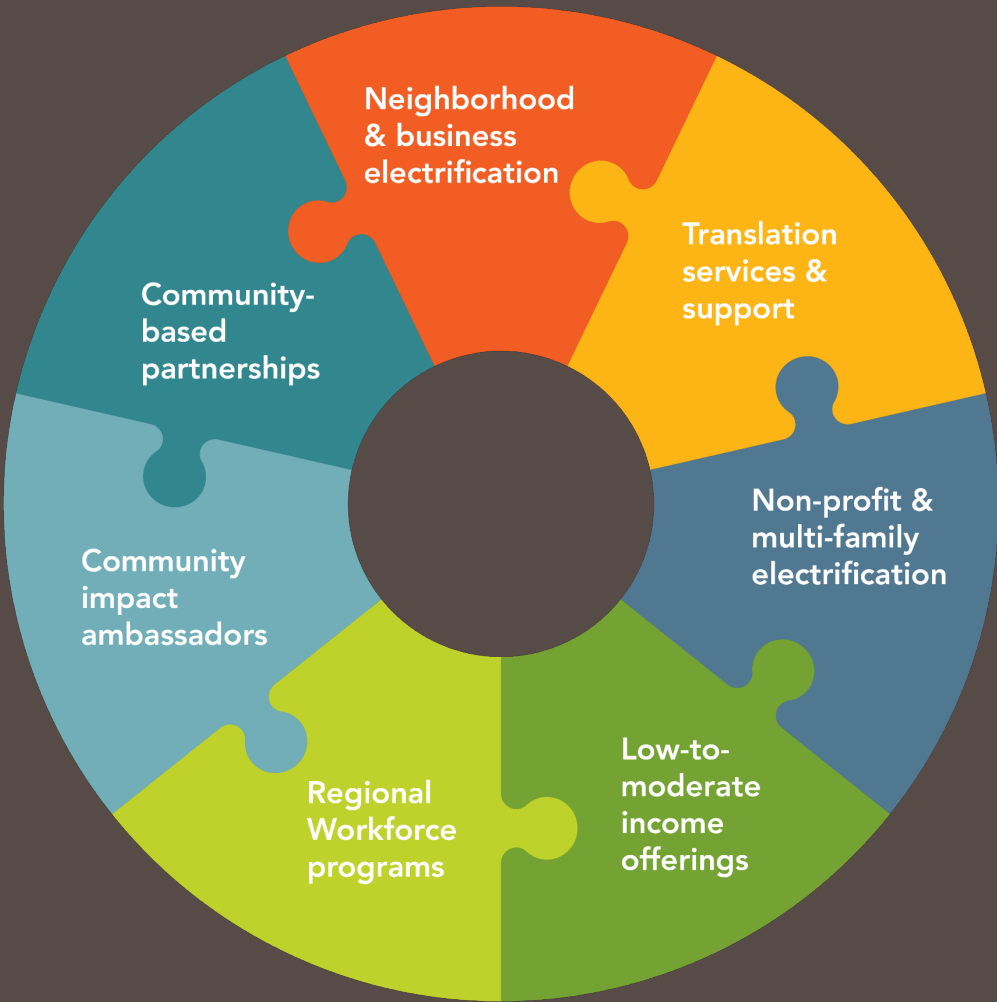
Affordability



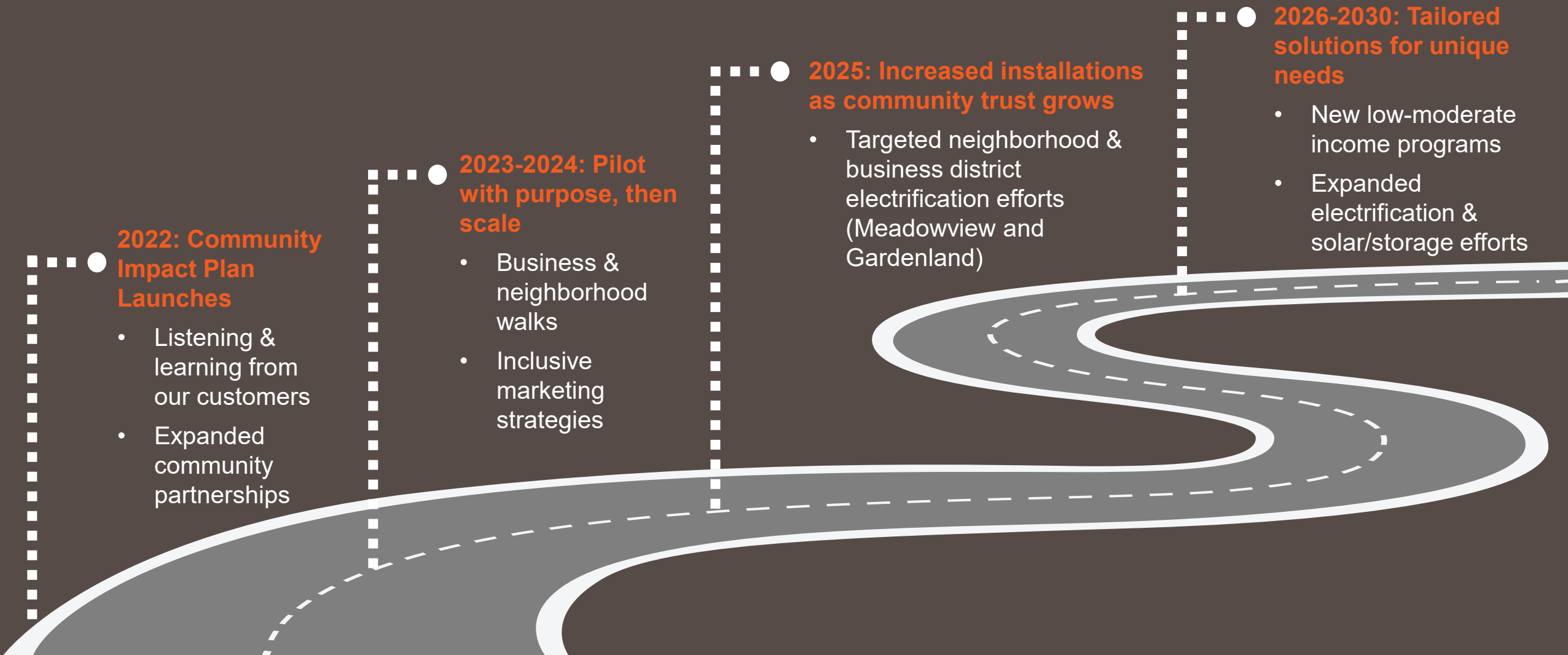
Equitable access



Community engagement



Community Impact Plan – Growth Trajectory to 2030



Progress from September 2022 - June 2025



Neighborhood Electrification

3 Year Goal: 2,300 Measures

- 646 Homes
- 2,519 Measures Installed



Marketing

3-Year Goal: 30 new marketing pieces

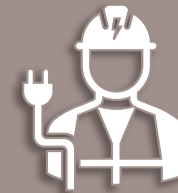
- 43 new Marketing Materials with new QR code
- 199 translated pieces; 23 languages



Shine Awards

3 Year Goal: 35+ Awards

- 45 Awards



Zero Carbon Regional Workforce

3-Year Goal: 240 trained, 120 placed

- 315 Trained
- 121 Placed



Community-Based Partnerships

3-Year Goal: 100+ partnerships

- 125 Partnerships



Business District Electrification

3-Year Goal: 150+ businesses (500 measures)

- 35 Businesses Electrified
- 114 Measures Installed



Commercial Kitchen Electrification

3-Year Goal: 10+ kitchens (50+ measures)

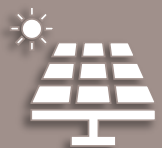
- 6 Kitchens Electrified
- 12 Measures installed



Customer Outreach (Residential)

3-Year Goal: 6,000 signups

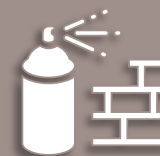
- 7,616 Join the Charge signups



Solar & Storage for Nonprofits (Pilot)

2025 Goal: 2 completed installations

- 3 signed contracts; projects in-progress



Customer Outreach (Commercial)

- 40 business walks
- 10,087 live business touches

Building resilient communities

Community Partnerships



Shine Awards



Inclusive Economic Development



Regional Workforce Development & STEM Education



Business District Electrification

Lil Joe's Restaurant – Del Paso Boulevard

Heat pump water heater design – first of its kind in a kitchen setting!

Boys & Girls Club – Raley Branch

Fully electrified building including a commercial kitchen and EV chargers.

EV charging

CIP has funded 8 Level 2 EV handles at three sites:

- La Familia Counseling Center
- Shop Class
- Capital Black Chamber of Commerce

13 additional projects are in the queue totaling 46 handles



Kitchen Electrification

12 measures installed and 15 in the pipeline

- Upcoming Kitchen Electrification projects:
 - Sacramento Asian Sports Foundation
 - Sacramento Boys & Girls Club (Teen Center)
 - Luigi's Pizza
 - Grant Union & Foothill High Schools
 - Alchemist Public Market
 - La Familia Opportunity Center



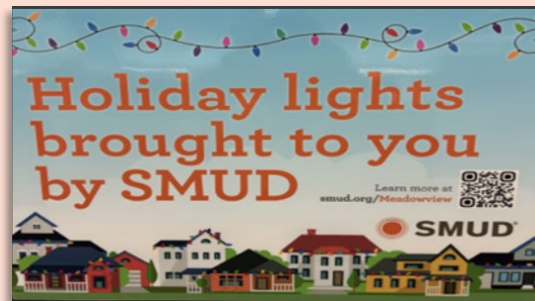
“Capitol City Elks Lodge #1147 is grateful for the support and looks forward to future collaborations. We deeply appreciate the shared commitment to our growth and revitalization.”

In community with our customers

Connecting our Communities Resource Expo



Customer Advocacy



Community Impact Ambassadors



Meet SMUD Events



Neighborhood Electrification

Meadowview Highlights

- 3 neighborhood walks and 34 events
- 412 new Energy Assistance Program Rate (EAPR) enrollments
- 379 assessments completed and 950 measures installed
- Exploring alternatives to traditional panel upgrades

Low-Moderate Income Pilot (LMI)

- Expanded outreach to include under-resourced customers who are not typically income-eligible and do not qualify for EAPR
- Assessed homes and installed measures that improved air quality leading to cleaner, safer, healthier homes; lower utility bills; and lower financial stress
- 27 assessments and 217 measures installed



Recent Customer Feedback

Thank you for the new heating and air system. Enjoying the comfortable indoor temperatures and quiet unit outside. Thank you so very much!

You have been a blessing to our family and community!



Community Partnership Installations



Partner Installation Highlights

109 solar installations; 91 also received storage
92 electric vehicle ready homes
98 weatherization and/or electrification measures



Regional Workforce Development

Workforce Development Programs

Northern California Construction Training's (NCCT) electrician pre-apprenticeship

- Trained 173 and placed 73

GRID Alternatives' Solar Installation Basics Training

- Trained 188 and placed 107

Highlights

Four students from NCCT's training program were inducted into the IBEW Construction Wireman program

- Hired onto SMUD's Sloughhouse solar project (December 2024)

Graduates of both NCCT's and GRID Alternatives' programs were also hired with Utility Partners of America (UPA) to support SMUD's meter replacement project.



Creating Lasting Impact

Trust	<ul style="list-style-type: none"> • Neighborhood & Business District electrification surveys • Post-installation bill savings versus projected savings • Changes in customer-initiated interactions • Changes in adoption trends
Economic	<ul style="list-style-type: none"> • Avoided costs • Expanded workforce development opportunities
Social	<ul style="list-style-type: none"> • Sense of community (Shine Awards, Community Events, Neighborhood Electrification) • Improved safety (in-home and community) • Improved quality of life (World Health Organization)
Health	<ul style="list-style-type: none"> • Improved in-home air quality (extrapolated) • Improved health outcomes • Improved comfort • Improved quality of life



Looking to the Future

Affordability



- Business district and neighborhood electrification
- Provide support where federal funding has been cut
- New customer assistance programs

Equitable Access



- Zero carbon workforce development
- Increase education and adoption of all-electric kitchens
- Expand access to public charging
- Solar & Storage for Nonprofits

Community Engagement



- Increase tree canopy, shrubs, & fruit trees
- Expand translation services
- Expand community outreach and partnerships

New to CIP

Low-Moderate Income Customer Assistance

Expand customer assistance programs to support low-moderate income individuals; initial pilot group will be customers that applied for EAPR, but were denied

Solar & Storage for Nonprofits

Pilot program offering up to 100 percent incentives to nonprofits for rooftop solar and storage installation

Shade Tree Partnership

Expand Shade Tree Partnership to include shrubs & fruit trees; shrubs will provide a lower maintenance cost alternative for our customers that want to shade their homes and improve air quality