

# Exhibit to Agenda Item #7

Adopt a map adjusting SMUD's political ward boundaries based on the 2020 data released by the U.S. Census Bureau.

Board of Directors Meeting

Thursday, January 20, 2022, scheduled to begin at 5:30 p.m.

Virtual Meeting (online)

# Board Adopted Criteria

- Adjust wards so they are, as far as practicable, equal in population such that the population deviation between the largest and smallest wards does not exceed 10% [Range 215,981 to 237,579];
- Consider communities of common interest: contiguous populations which share common social and economic interests that should be included within a single district for purposes of its effective and fair representation;
- Consider geography and topography; and
- Consider cohesiveness, contiguity, integrity, and compactness of territory.

# Process and Schedule

- Board adopted criteria on Jul. 15, 2021.
- Board adopted first public workshop timeframe for late October/early November 2021 and the second public workshop timeframe for late November/early December 2021.
  - Nov. 4, 2021 (first workshop)
  - Dec. 15, 2021 (second workshop)
- Draft maps presented to Board Finance & Audit Committee (Oct. 19, 2021)
- Board approved release of the two preliminary maps for comment (Oct. 21, 2021)
- Community Engagement notified more than 200 community organizations
- Information and maps publicly posted on the SMUD website, and large maps posted at Customer Service Center and SMUD Headquarters.

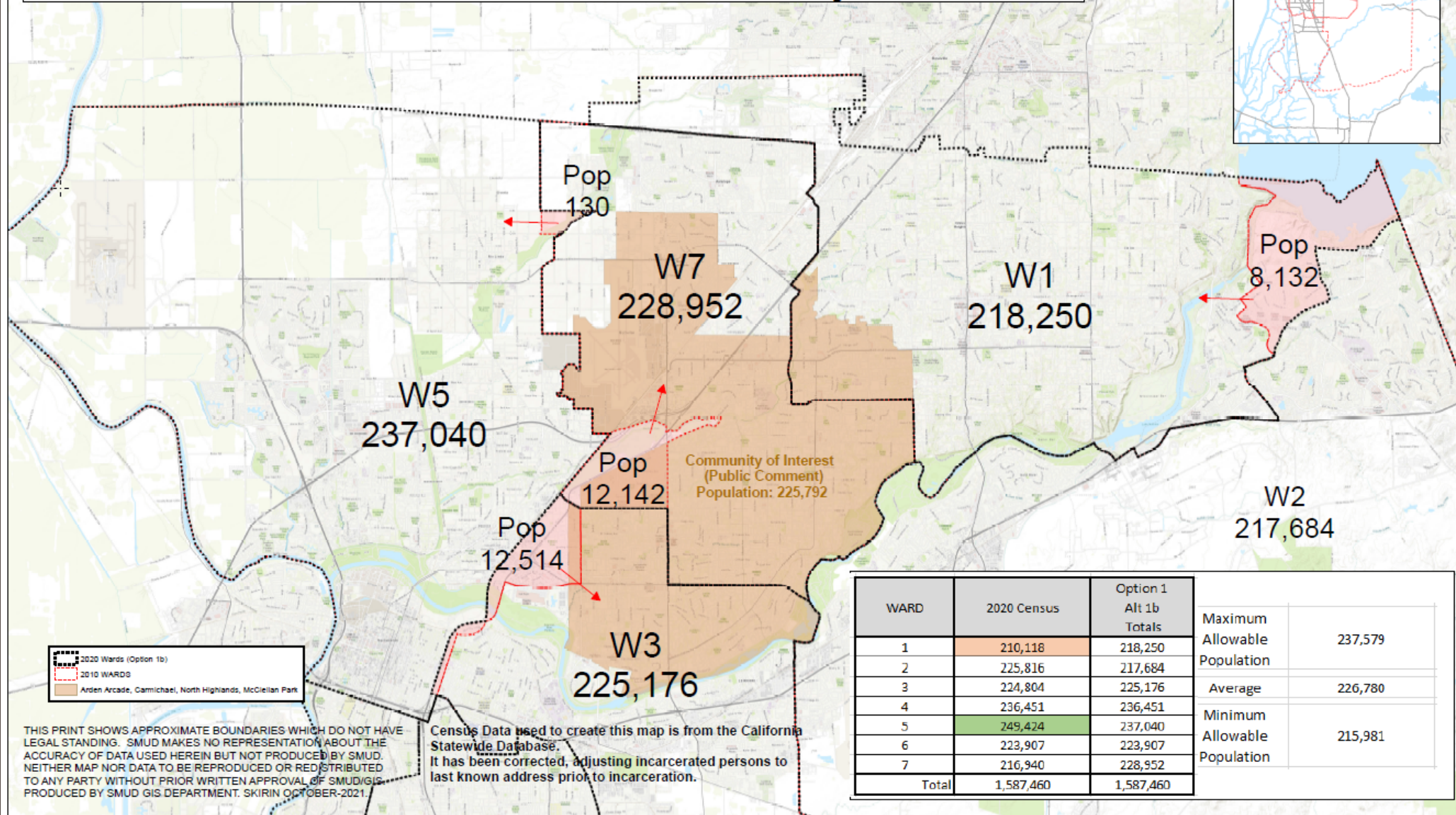
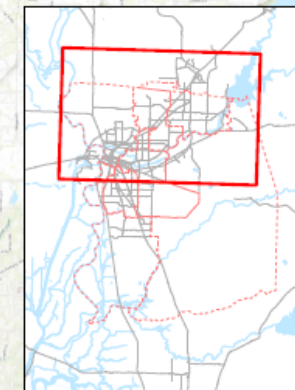
# Process and Schedule (cont.)

- First Public Workshop held on Nov. 4, 2021
- Board reviewed public comment and requested creation of alternative map Option 1a (Nov. 16, 2021)
- Board selected preferred alternative map Option 1a for presentation at the second Public Workshop (Nov. 18, 2021)
- Second Public Workshop held on Dec. 15, 2021
- Additional public and Board input (additional map Option 1b developed and posted)
- Review public comments with Board and recommend final map (Jan. 18, 2022)
- Board adopts final map (Jan. 20, 2022, Board meeting)





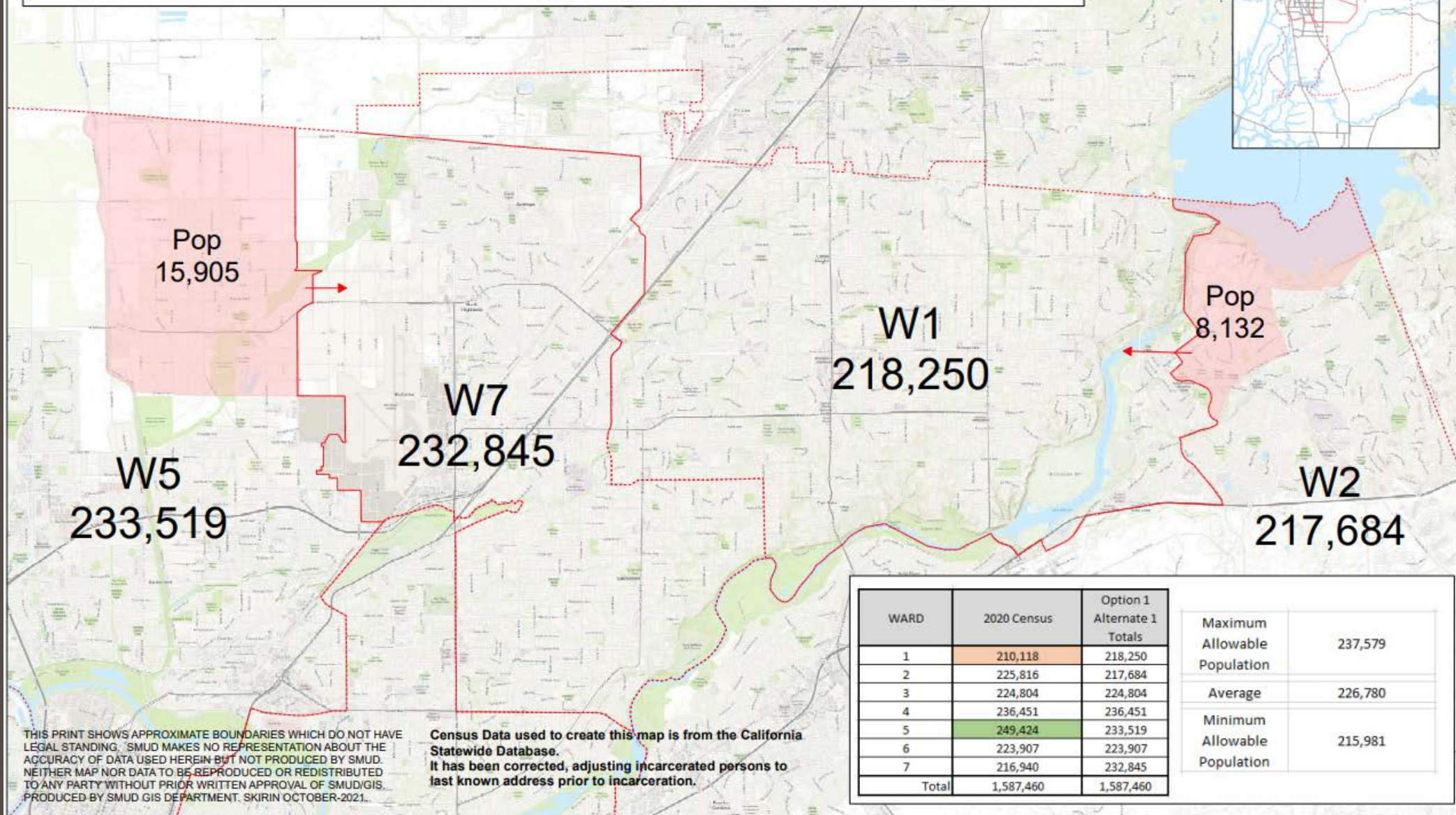
# 2020 Redistricting Alternative Option 1b - Focus Map with Public Comment Community of Interest







# 2020 Redistricting Preferred Alternative Option 1a - Focus Map



THIS PRINT SHOWS APPROXIMATE BOUNDARIES WHICH DO NOT HAVE LEGAL STANDING. SMUD MAKES NO REPRESENTATION ABOUT THE ACCURACY OF DATA USED HEREIN BUT NOT PRODUCED BY SMUD. NEITHER MAP NOR DATA TO BE REPRODUCED OR REDISTRIBUTED TO ANY PARTY WITHOUT PRIOR WRITTEN APPROVAL OF SMUD/GIS. PRODUCED BY SMUD GIS DEPARTMENT. SKIRIN OCTOBER-2021.

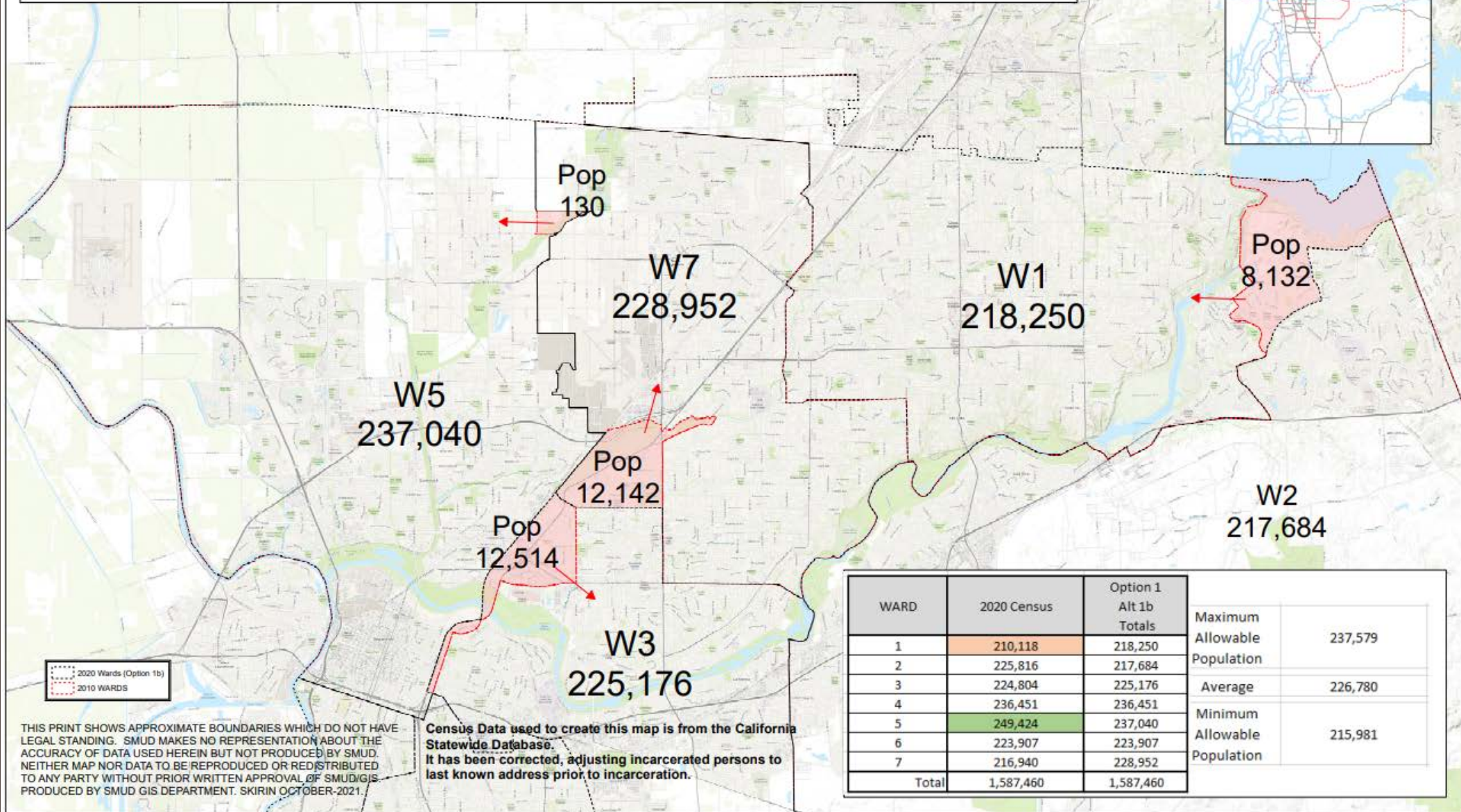
Census Data used to create this map is from the California Statewide Database. It has been corrected, adjusting incarcerated persons to last known address prior to incarceration.

WARD	2020 Census	Option 1 Alternate 1 Totals	Maximum Allowable Population	237,579	
1	210,118	218,250	Average	226,780	
2	225,816	217,684			
3	224,804	224,804	Minimum Allowable Population	215,981	
4	236,451	236,451			
5	249,424	233,519			
6	223,907	223,907			
7	216,940	232,845			
Total	1,587,460	1,587,460			





# 2020 Redistricting Alternative Option 1b - Focus Map



# Requested Action

- Select and approve the final map adjusting SMUD's political Ward boundaries and direct staff to prepare the legal description.
- Authorize the General Counsel to make minor, non-substantive adjustments to the boundaries to accommodate voter precincts.
- Authorize the General Counsel to file the map with Sacramento and Placer Counties.