

Exhibit to Agenda Item #1

Discuss adoption of a map adjusting SMUD's political ward boundaries based on the 2020 data released by the U.S. Census Bureau.

Board Finance & Audit Committee and Special SMUD Board of Directors Meeting
Tuesday, January 18, 2022, scheduled to begin at 5:30 p.m.

Virtual Meeting (online)

Board Adopted Criteria

- Adjust wards so they are, as far as practicable, equal in population such that the population deviation between the largest and smallest wards does not exceed 10% [Range 215,981 to 237,579];
- Consider communities of common interest: contiguous populations which share common social and economic interests that should be included within a single district for purposes of its effective and fair representation;
- Consider geography and topography; and
- Consider cohesiveness, contiguity, integrity, and compactness of territory.

Process and Schedule

- Board adopted criteria on Jul. 15, 2021.
- Board adopted first public workshop timeframe for late October/early November 2021 and the second public workshop timeframe for late November/early December 2021.
 - Nov. 4, 2021 (first workshop)
 - Dec. 15, 2021 (second workshop)
- Draft maps presented to Board Finance & Audit Committee (Oct. 19, 2021)
- Board approved release of the two preliminary maps for comment (Oct. 21, 2021)
- Community Engagement notified more than 200 community organizations
- Information and maps publicly posted on the SMUD website, and large maps posted at Customer Service Center and SMUD Headquarters.

Process and Schedule (cont.)

- First Public Workshop held on Nov. 4, 2021
- Board reviewed public comment and requested creation of alternative map Option 1a (Nov. 16, 2021)
- Board selected preferred alternative map Option 1a for presentation at the second Public Workshop (Nov. 18, 2021)
- Second Public Workshop held on Dec. 15, 2021
- Additional public and Board input
- Additional map (Option 1b) developed and posted on website
- Review public comments with Board and recommend final map (Jan. 18, 2022)
- Board adopts final map (Jan. 20, 2022, Board meeting)

Public Outreach

- SMUD *Connections* (October residential newsletter)
 - 256,434 emailed
 - 340,739 hard copies mailed
- Letters mailed to residents: 127,571
- Emails & Follow up calls to Chambers of Commerce and Neighborhood Associations: 230
- Facebook views: 41,962
- Twitter views: 26,581
- Landing page (smud.org/redistricting) views: 2,515 (as of 7:36AM, 1/18/22)

Public Comment

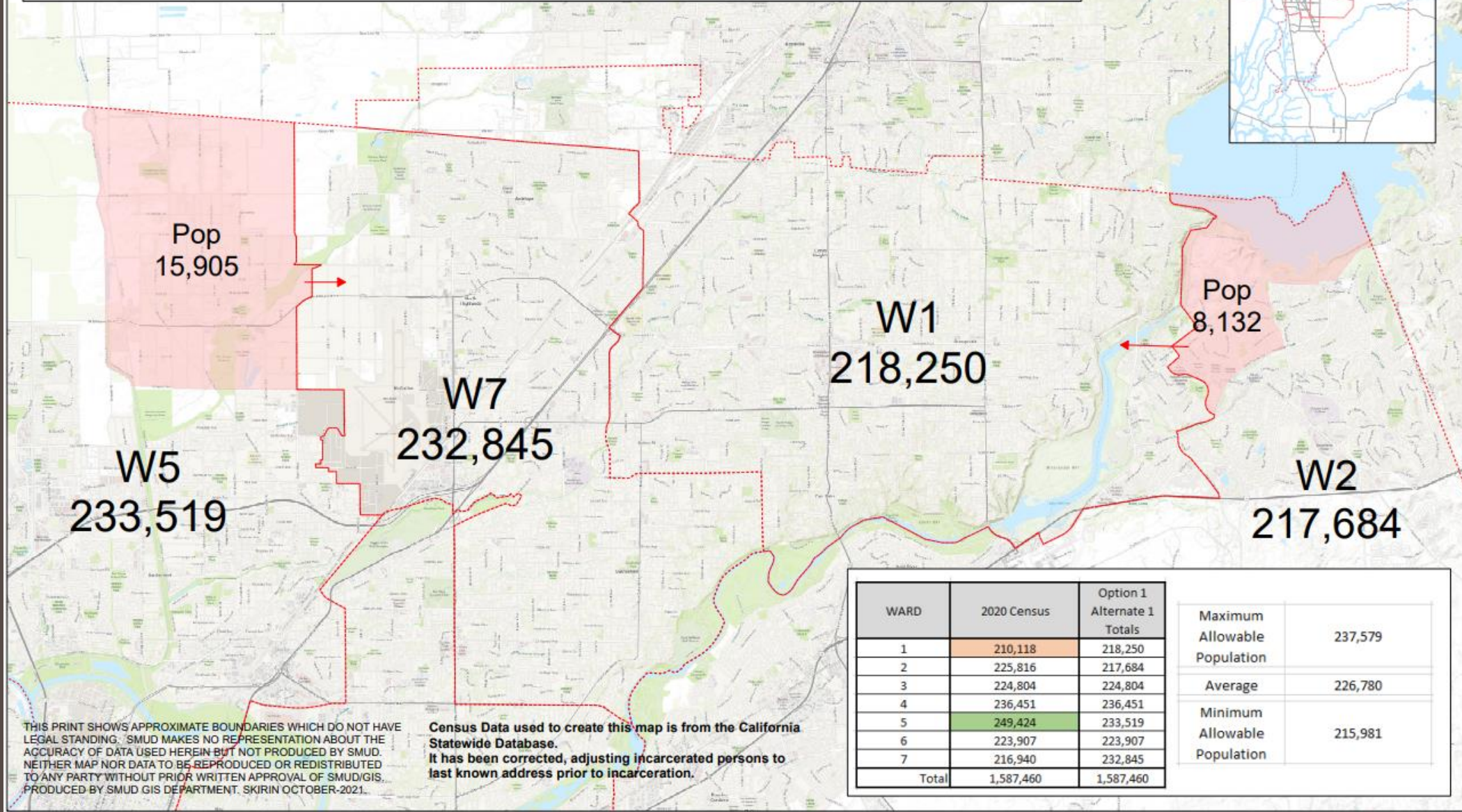
- General requests for information about the Redistricting process and its purpose
- Consider providing communications in multiple languages
- Provide Frequently Asked Questions (FAQs)
- Consider removing odd shaped areas, or appendages, from existing Wards so they do not give the appearance of gerrymandering
- How does SMUD define a community of interest?
- Why is SMUD's redistricting not in sync with new City Council and Board of Supervisors Districts?

Option 1a and 1b Maps

- No comments were submitted on the specific changes proposed by Option 1a, though feedback did express a preference for making some of the wards look more compact.
- Option 1b was developed by staff to address public and board feedback about compactness.
- Both maps:
 - Meet the population requirements
 - Retain and help unite communities of interest
 - Make modifications to the existing wards



2020 Redistricting Preferred Alternative Option 1a - Focus Map



THIS PRINT SHOWS APPROXIMATE BOUNDARIES WHICH DO NOT HAVE LEGAL STANDING. SMUD MAKES NO REPRESENTATION ABOUT THE ACCURACY OF DATA USED HEREIN BUT NOT PRODUCED BY SMUD. NEITHER MAP NOR DATA TO BE REPRODUCED OR REDISTRIBUTED TO ANY PARTY WITHOUT PRIOR WRITTEN APPROVAL OF SMUD/GIS. PRODUCED BY SMUD GIS DEPARTMENT. SKIRIN OCTOBER-2021.

Census Data used to create this map is from the California Statewide Database. It has been corrected, adjusting incarcerated persons to last known address prior to incarceration.

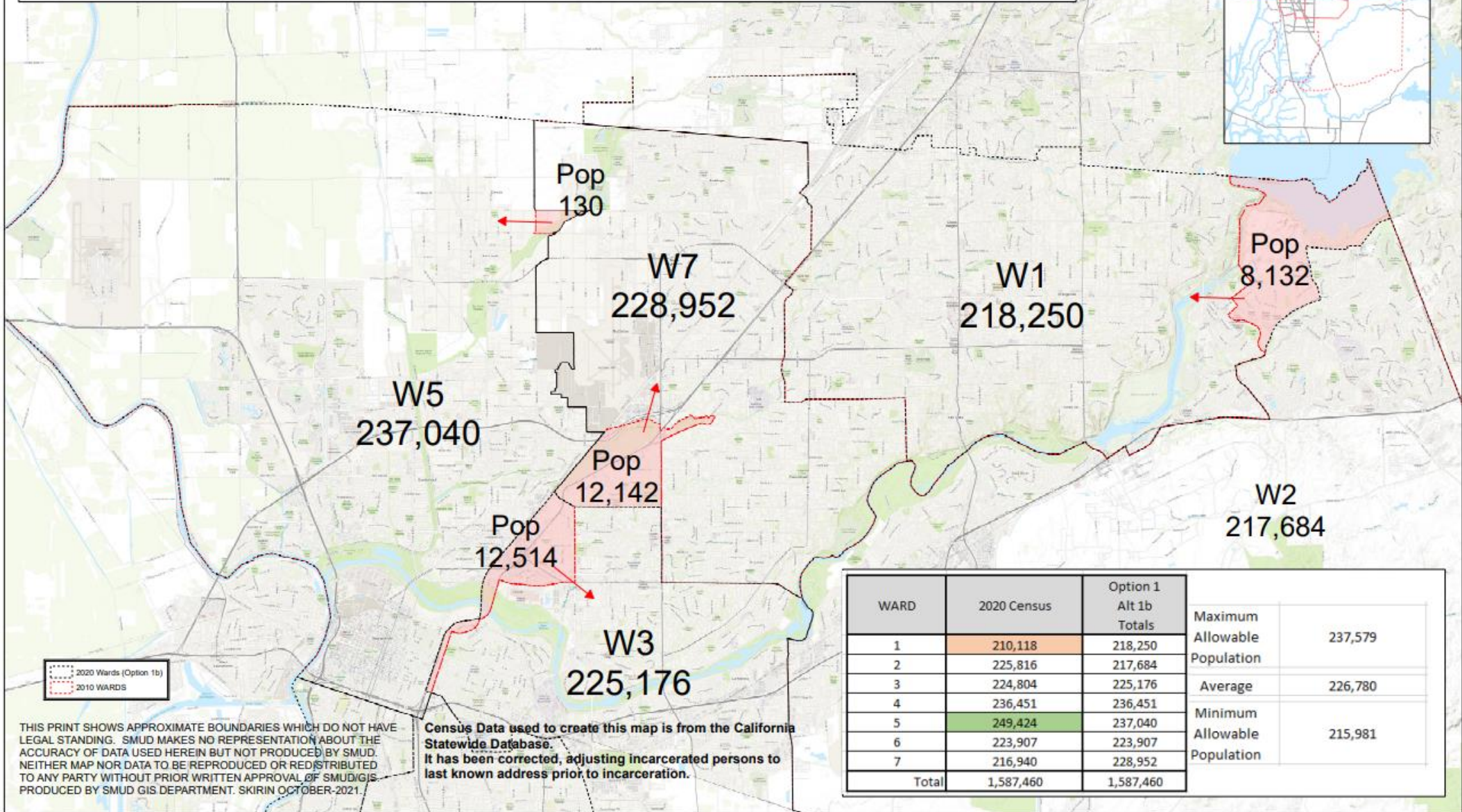
WARD	2020 Census	Option 1 Alternate 1 Totals
1	210,118	218,250
2	225,816	217,684
3	224,804	224,804
4	236,451	236,451
5	249,424	233,519
6	223,907	223,907
7	216,940	232,845
Total	1,587,460	1,587,460

Maximum Allowable Population	237,579
Average	226,780
Minimum Allowable Population	215,981





2020 Redistricting Alternative Option 1b - Focus Map



--- 2020 Wards (Option 1b)
- - - 2010 WARDS

THIS PRINT SHOWS APPROXIMATE BOUNDARIES WHICH DO NOT HAVE LEGAL STANDING. SMUD MAKES NO REPRESENTATION ABOUT THE ACCURACY OF DATA USED HEREIN BUT NOT PRODUCED BY SMUD. NEITHER MAP NOR DATA TO BE REPRODUCED OR REDISTRIBUTED TO ANY PARTY WITHOUT PRIOR WRITTEN APPROVAL OF SMUD/GIS PRODUCED BY SMUD GIS DEPARTMENT. SKIRIN OCTOBER-2021

Census Data used to create this map is from the California Statewide Database. It has been corrected, adjusting incarcerated persons to last known address prior to incarceration.

WARD	2020 Census	Option 1 Alt 1b Totals		
1	210,118	218,250	Maximum Allowable Population	237,579
2	225,816	217,684		
3	224,804	225,176	Average	226,780
4	236,451	236,451	Minimum Allowable Population	215,981
5	249,424	237,040		
6	223,907	223,907		
7	216,940	228,952		
Total	1,587,460	1,587,460		



Demographic Information

Ward	Total Population	Hispanic Origin	Percentage Hispanic	White	% White	Black	% Black	Native American	% Native American	Asian	% Asian	Hawaiian	% Hawaiian	Other	% Other	2 or more Races	% 2+
W1	210,118	33,870	16.12	140,834	67.03	6,548	3.12	1,119	0.53	11,711	5.57	743	0.35	1,398	0.67	13,895	6.61
W2	225,816	46,821	20.73	109,383	48.44	11,898	5.27	974	0.43	38,889	17.22	1,599	0.71	1,434	0.64	14,818	6.56
W3	224,804	46,622	20.74	93,864	41.75	20,056	8.92	951	0.42	44,117	19.62	2,391	1.06	1,436	0.64	15,367	6.84
W4	236,451	45,908	19.42	73,402	31.04	25,865	10.94	718	0.30	69,476	29.38	2,968	1.26	1,565	0.66	16,549	7.00
W5	249,424	74,181	29.74	78,847	31.61	31,762	12.73	1,360	0.55	42,615	17.09	2,968	1.19	1,915	0.77	15,776	6.32
W6	223,907	81,977	36.61	39,164	17.49	32,654	14.58	1,136	0.51	50,791	22.68	5,837	2.61	1,386	0.62	10,962	4.90
W7	216,940	43,454	20.03	116,617	53.76	17,456	8.05	1,203	0.55	19,773	9.11	1,508	0.70	1,429	0.66	15,500	7.14

Total: 1,587,460

<i>Preferred Alternative Option 1a</i>																	
W1	218,250	35,213	16.13	145,997	66.89	6,706	3.07	1,158	0.53	12,281	5.63	765	0.35	1,451	0.66	14,679	6.73
W2	217,684	45,478	20.89	104,220	47.88	11,740	5.39	935	0.43	38,319	17.60	1,577	0.72	1,381	0.63	14,034	6.45
W3	224,804	46,622	20.74	93,864	41.75	20,056	8.92	951	0.42	44,117	19.62	2,391	1.06	1,436	0.64	15,367	6.84
W4	236,451	45,908	19.42	73,402	31.04	25,865	10.94	718	0.30	69,476	29.38	2,968	1.26	1,565	0.66	16,549	7.00
W5	233,519	70,082	30.01	69,330	29.69	31,410	13.45	1,248	0.53	41,889	17.94	2,911	1.25	1,845	0.79	14,804	6.34
W6	223,907	81,977	36.61	39,164	17.49	32,654	14.58	1,136	0.51	50,791	22.68	5,837	2.61	1,386	0.62	10,962	4.90
W7	232,845	47,553	20.42	126,134	54.17	17,808	7.65	1,315	0.56	20,499	8.80	1,565	0.67	1,499	0.64	16,472	7.07

Total: 1,587,460

<i>Alternative Option 1b</i>																	
W1	218,250	35,213	16.13	145,997	66.89	6,706	3.07	1,158	0.53	12,281	5.63	765	0.35	1,451	0.66	14,679	6.73
W2	217,684	45,478	20.89	104,220	47.88	11,740	5.39	935	0.43	38,319	17.60	1,577	0.72	1,381	0.63	14,034	6.45
W3	225,176	48,413	21.50	92,995	41.30	20,360	9.04	946	0.42	43,449	19.30	2,442	1.08	1,474	0.65	15,097	6.70
W4	236,451	45,908	19.42	73,402	31.04	25,865	10.94	718	0.30	69,476	29.38	2,968	1.26	1,565	0.66	16,549	7.00
W5	237,040	69,767	29.43	75,106	31.68	30,136	12.71	1,286	0.54	41,262	17.41	2,835	1.20	1,829	0.77	14,819	6.25
W6	223,907	81,977	36.61	39,164	17.49	32,654	14.58	1,136	0.51	50,791	22.68	5,837	2.61	1,386	0.62	10,962	4.90
W7	228,952	46,077	20.13	121,227	52.95	18,778	8.20	1,282	0.56	21,794	9.52	1,590	0.69	1,477	0.65	16,727	7.31

Total: 1,587,460

	Total Population	Hispanic Origin	White	Black	Native American	Asian	Hawaiian	Other	2 or More Races
<i>Preferred Alternative Option 1a</i>									
Folsom	8,132	1,343	5,163	158	39	570	22	53	784
Rio Linda	15,905	4,099	9,517	352	112	726	57	70	972
<i>Alternative Option 1b</i>									
Folsom	8,132	1,343	5,163	158	39	570	22	53	784
Rio Linda	130	32	87	0	0	4	2	0	5
East of Bus 80	12,514	4,446	3,828	1,626	74	1,357	135	86	962
North of Marconi	12,142	2,655	4,697	1,322	79	2,025	84	48	1,232

Requested Action

- Select final map adjusting SMUD's political Ward boundaries and direct staff to prepare the legal description.
- Authorize the General Counsel to make minor, non-substantive adjustments to the boundaries to accommodate voter precincts.
- Authorize the General Counsel to file the map with Sacramento and Placer Counties.