



SACRAMENTO - SAN JOAQUIN

DELTA CONSERVANCY

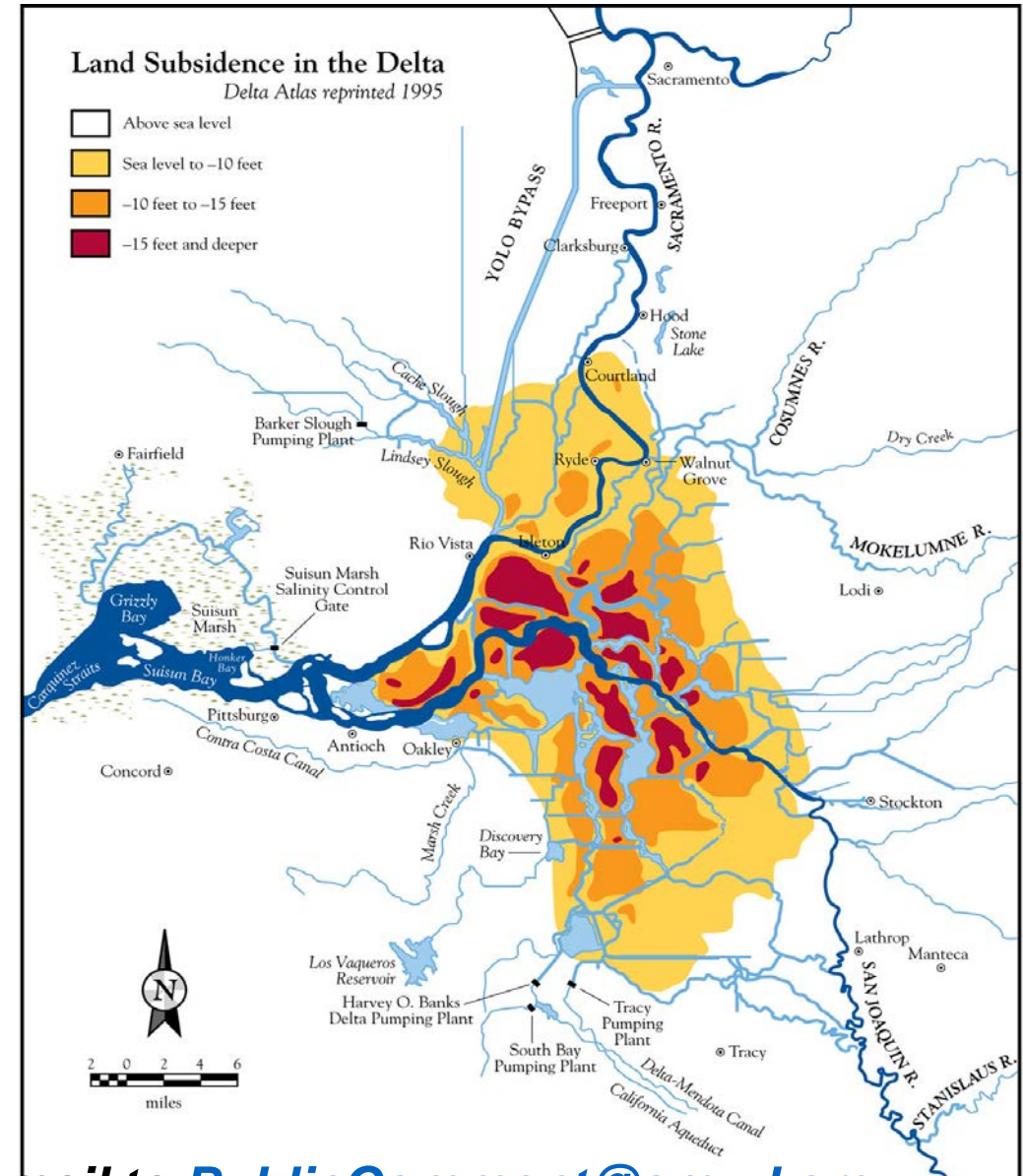
A California State Agency

Update on Land Based Carbon Opportunities in the Sacramento-San Joaquin Delta

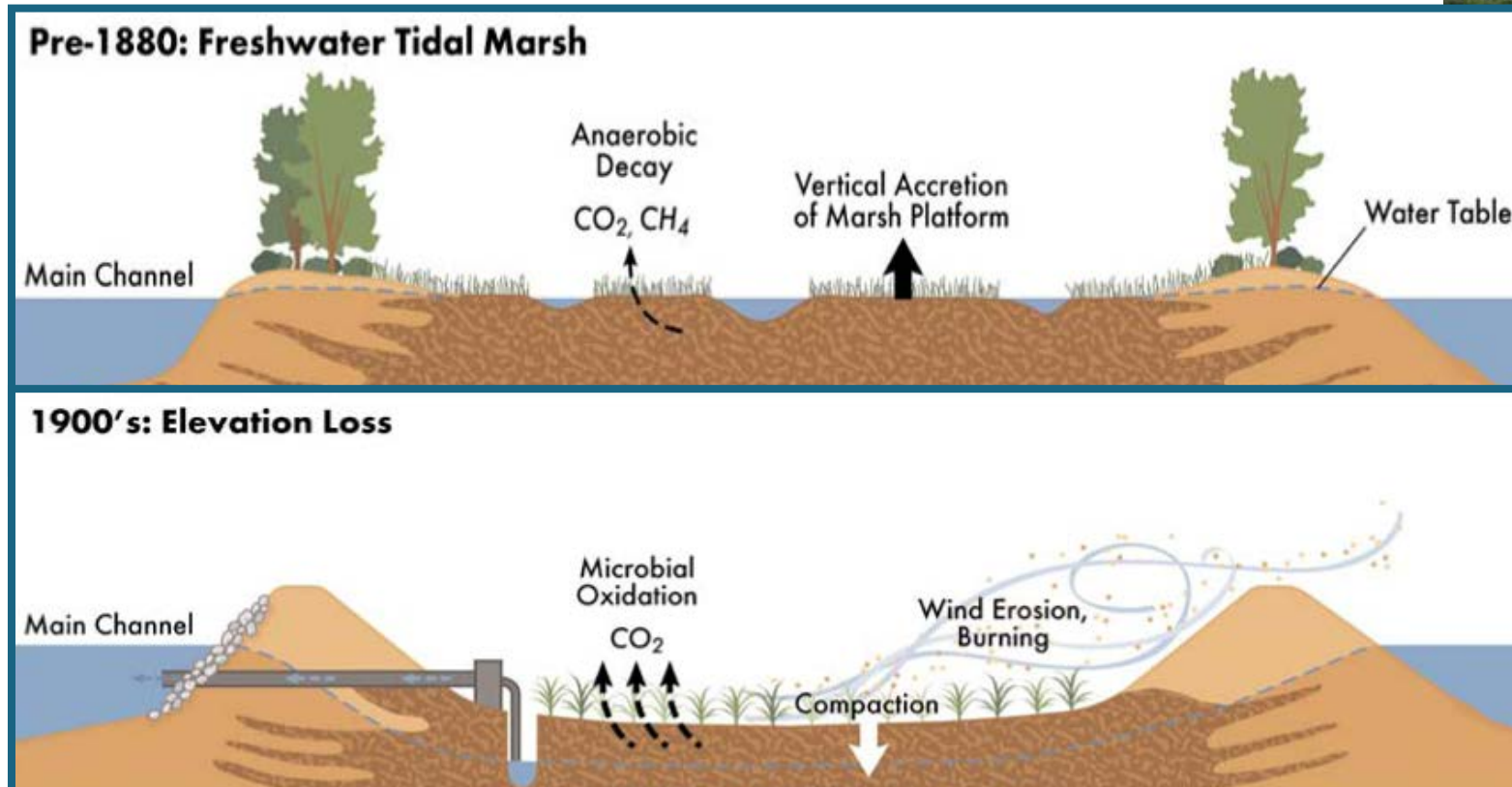
campbell.ingram@deltaconservancy.ca.gov

Subsidence and Risks

- Subsidence continues at rates ranging from 0.5 to 1.5 inches per year
- Sea levels rising at a rate of about 0.3 inch per year



Subsidence Process



Board Strategic Development Committee and
 Special SMUD Board of Directors Meeting

Public comment may be submitted via e-mail to PublicComment@smud.org

Carbon Emissions Quantified

- Average of 15 metric tons of CO₂ per acre per year
- ~2,000,000 metric tons of CO₂ per year, Delta total
- ~500,000 vehicle equivalent
- Just over 1/4 of CA's total plant-based agriculture carbon emissions

Greenhouse Gas Emissions Reductions

- ACR Methodology approved in April 2017 – First 3rd party validation/verification in progress for 1,600 acres of wetland
- Ongoing discussions with ARB for eventual inclusion in the compliance program
- Working with public and private landowners to develop pilot projects
- Working with carbon financiers and investors to market resulting carbon credits
- Conservancy receives \$5.2 million for climate resilience work

Updates

- CNRA Releases the first Climate Smart Land Strategy, and 30X30 Initiative, highlighting the significance of natural and working lands in achieving the State's climate and biodiversity objectives
- Rice cultivation comes to the Delta. Likely 5,000 to 7,000 acres in the coming years
- Public/private partnerships for whole island mosaics (rice, wetland, habitat, high value crops) to manage carbon/subsidence and improve economic viability
- Delta identified as one of two places in the Western US for Carbon Capture Storage

Board Strategic Development Committee and Special SMUD Board of Directors Meeting

Public comment may be submitted via e-mail to PublicComment@smud.org