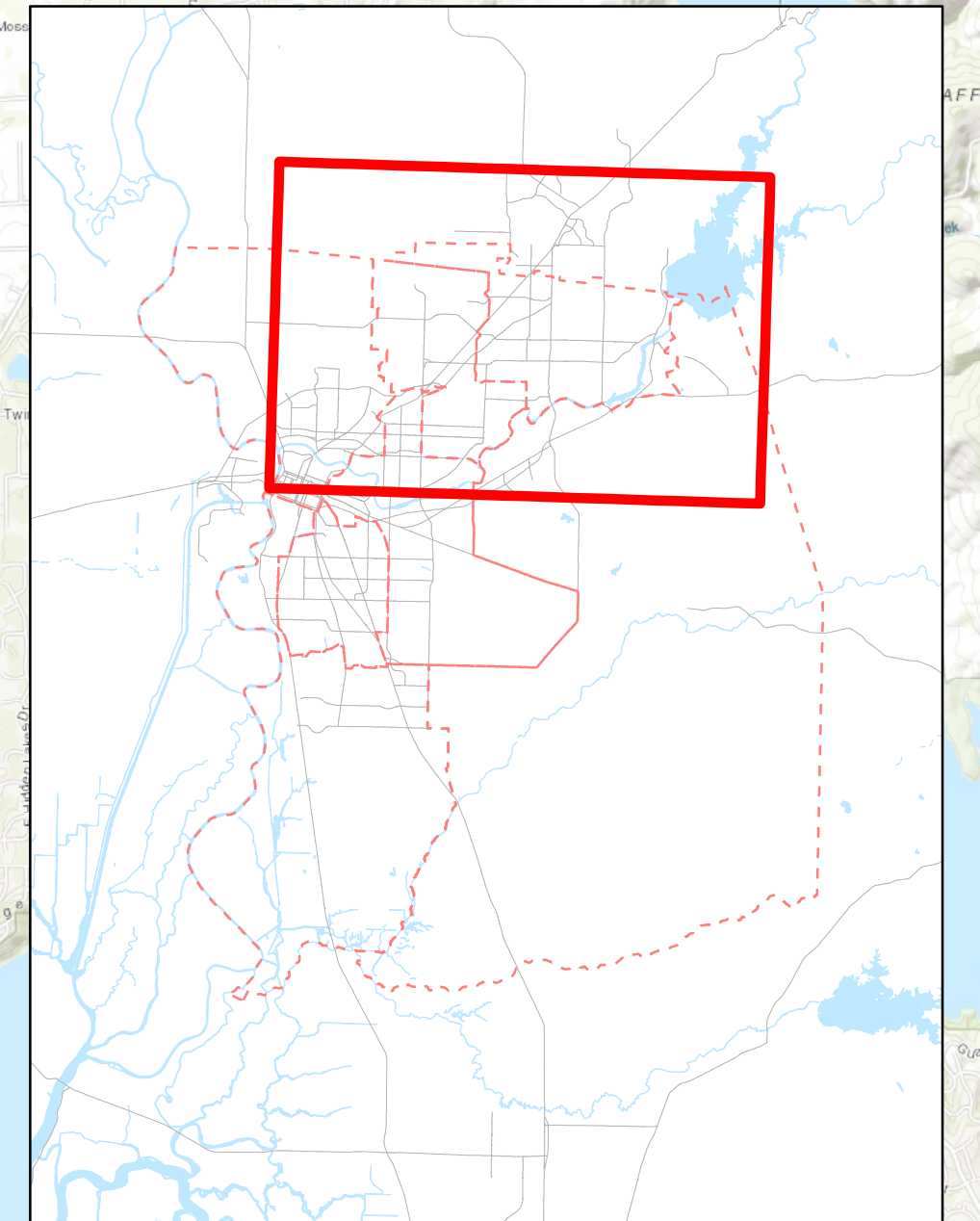




**SMUD®**

# 2020 Redistricting Option 1 - Focus Map



Pop  
15,905

W5  
233,519

W7  
232,845

W1  
216,529

Pop  
6,411

THIS PRINT SHOWS APPROXIMATE BOUNDARIES WHICH DO NOT HAVE LEGAL STANDING. SMUD MAKES NO REPRESENTATION ABOUT THE ACCURACY OF DATA USED HEREIN BUT NOT PRODUCED BY SMUD. NEITHER MAP NOR DATA TO BE REPRODUCED OR REDISTRIBUTED TO ANY PARTY WITHOUT PRIOR WRITTEN APPROVAL OF SMUD/GIS. PRODUCED BY SMUD GIS DEPARTMENT. SKIRIN OCTOBER-2021.

Census Data used to create this map is from the California Statewide Database. It has been corrected, adjusting incarcerated persons to last known address prior to incarceration.

WARD	2020 Census	Option 1 Totals
1	210,118	216,529
2	225,816	219,405
3	224,804	224,804
4	236,451	236,451
5	249,424	233,519
6	223,907	223,907
7	216,940	232,845
Total	1,587,460	1,587,460

Maximum Allowable Population	237,579
Average	226,780
Minimum Allowable Population	215,981