

Exhibit to Agenda Item #1

Board Policy Committee and Special SMUD Board of Directors Meeting
Wednesday, March 11, 2020, scheduled to begin at 5:30 p.m.
Auditorium, SMUD Headquarters Building

Strategic Directive (SD)-6, Safety

Creating a safe environment for employees and the public is a core value of SMUD. Through continuous improvement, SMUD will be recognized as a leader in employee safety while also assuring the safety of the public related to SMUD operations and facilities. This includes a comprehensive approach to monitoring organizational and public safety performance. Therefore, SMUD will continue to improve safety results to:

Workplace Safety

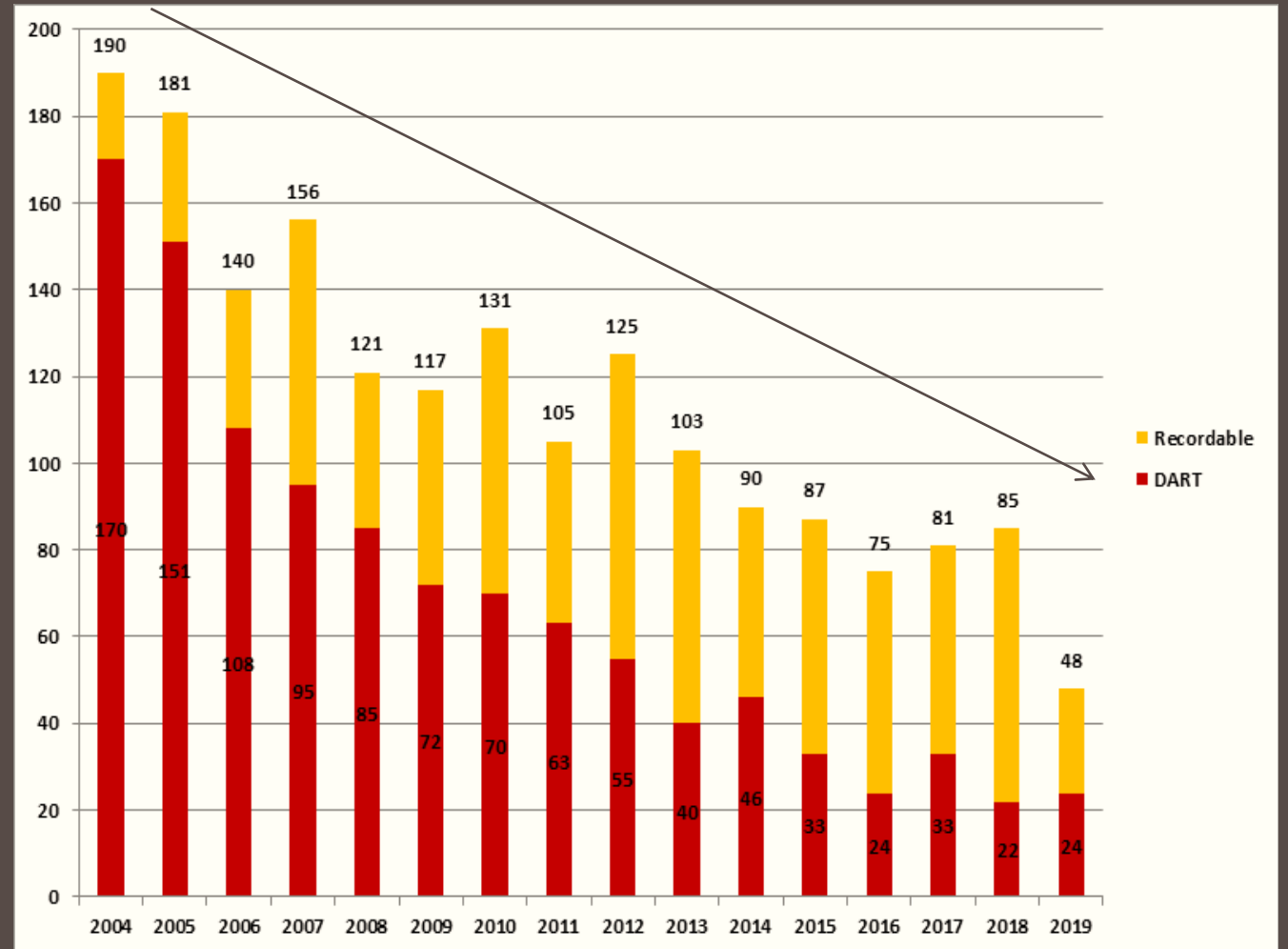
- a) Reduce SMUD's injury severity rate to 1.4 by 2020, as measured by OSHA's Days Away Restricted Time (DART), a rate that demonstrates strong safety performance.
- b) Provide timely, quality health care for injured employees that aids their recovery while maintaining positive financial performance of the workers' compensation program.

Public Safety

- a) Track and report injuries to the public related to SMUD operations or facilities.
- b) Implement measures to protect the public from injuries related to SMUD operations or facilities.

Workplace Safety

- Days Away Restricted Time (DART)
Rate of 1.1, Board Rate = 1.4
- 48 OSHA Recordables (44% decrease from 2018)
- 24 Lost Time/Modified Duty
- Improvements Due To: Safety for Life Culture, near miss reporting; accident/incident investigation; supervisor/employee interactions; management & employee engagement; behavior based safety; and wellness



Quality Care

Quality care of injured employees is measured through the Workers' Compensation program's performance, which is assessed annually by an independent actuary.

	2017	2018	2019
No. of Claims	168	150	118
Frequency rate per 100 employees	4.96	5.07	3.60
Reduction in indemnity benefits	29%	32%	21%

Public and Contractor Safety

Public Safety

- Billboard Campaign & Educational Outreach
- ER Personnel Training
- Gas Pipeline Safety Training
- 811 Call Before You Dig Contractor Training
- EMF/RF Support

Contractor Safety

- 53 Safety Contractor Pilot with ISN
- Pre-qualification
- Safety Plan Review and Onboarding
- Field Visits and Project Close outs
- Contract Language

Statistics:

- 252 Asset Collision Incidents
- 8 Electrical Contacts
- 48 Dig-ins



Safety Programs and Initiatives



Driver Safety

- Driver Ride-along & Roadeo's
- SMITH training



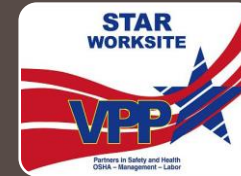
Supervisor-Employee Interactions

- 16,536 interactions
- Focus on field, office, and contractors



Wellness

- Hazard Assessment Programs
- Functional Movement Screening



Safety Management System & Leadership

- RFP development for a safety management database for up-to-date trending/analytics
- UARP VPP Certification



Safely Conducted Observations Reduce Common Hazards (SCORCH)

- 3,989 office interactions & 1,272 field visits



Accident and Incident Investigation

- Root cause analysis & report out
- Incident review and corrective action follow-up



Near Miss Reporting

- 66 Near miss reports



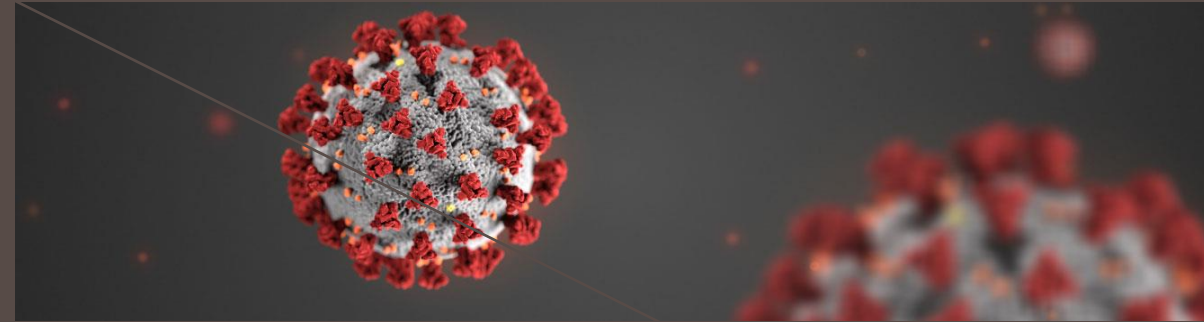
Safety for Life

- Joint Labor Management Safety Committees
- Subcommittees (e.g., tools, standards)
- Integration of safety at work and home

Coronavirus -19 (COVID-19)

SMUD Actions

- CDC, Public Health, & Peer Monitoring
- Pandemic Virus Standard Development
- Flu/Virus Prevention Campaign
- Director and Employee FAQs
- Restricted Travel
- Contractor Notification
- Childcare Notification and Resource Assistance
- Return to Work and Self Quarantine Policy Changes
- Weekly Safety Alerts or Employee Communications
- Safety Supply Ordering as of late January
- Review and Support in Business Continuity Plans
- *Safety in the News* Communication Site



Did you know?



The CDC recommends you avoid touching your eyes, nose and mouth to avoid viruses.

Did you know?



The CDC recommends you wash hands with soap and water for at least 20 seconds:

- After using the restroom
- Before eating
- After blowing your nose, coughing or sneezing

If soap and water are not available, use hand sanitizer with at least 60% alcohol. You'll find dispensers near stairs and elevators on SMUD campuses.

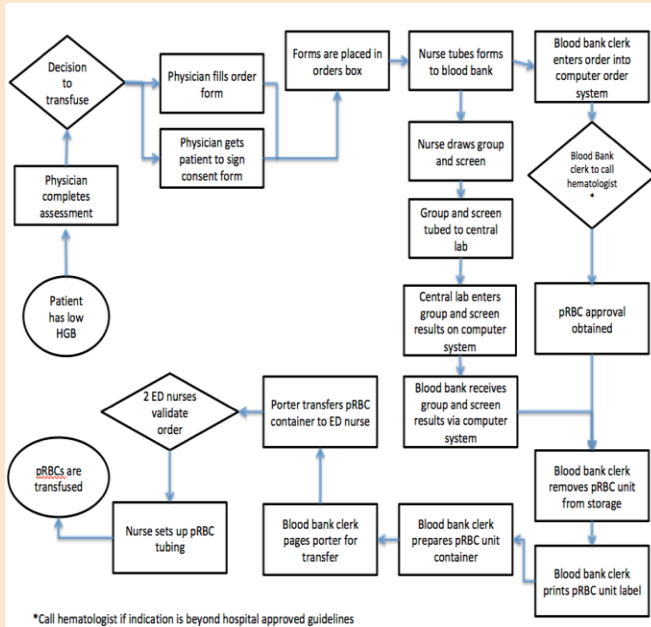
Did you know?



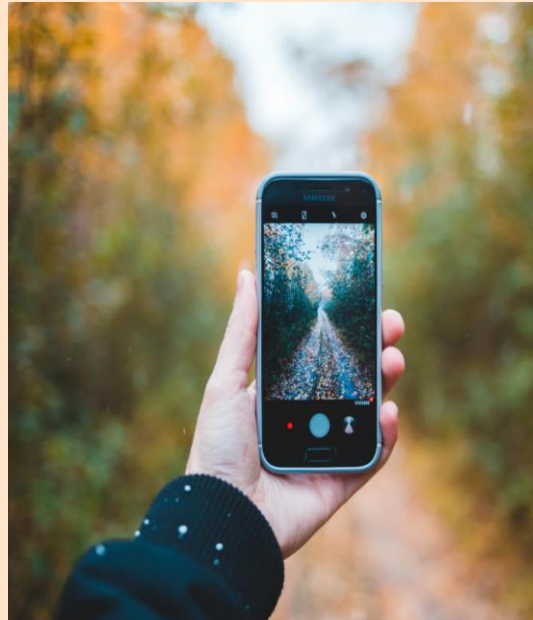
The CDC recommends you clean and disinfect frequently touched objects and surfaces.

Challenges

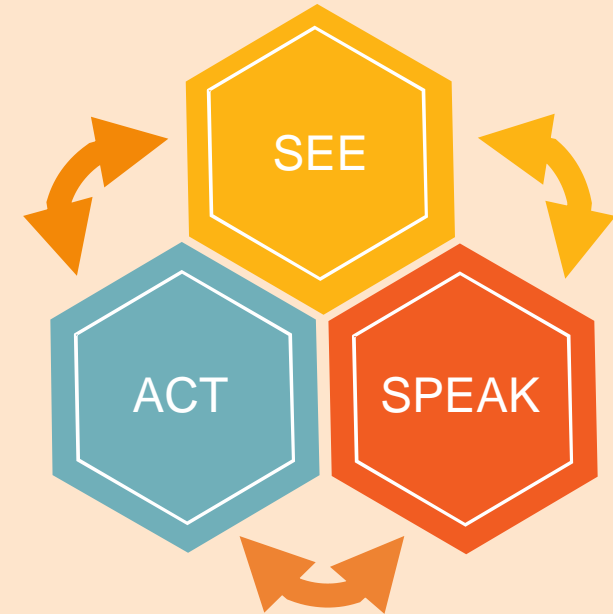
Incidents and Injuries



Data Management



Zero Accident Culture



Requested Action

- Accept the Q4 monitoring report for SD-6 Safety.
- Place item on the Board consent calendar for approval.