

Connections

Go solar today, save tomorrow

SMUD customers can now enjoy the benefits of solar power without having to own a solar electric system.

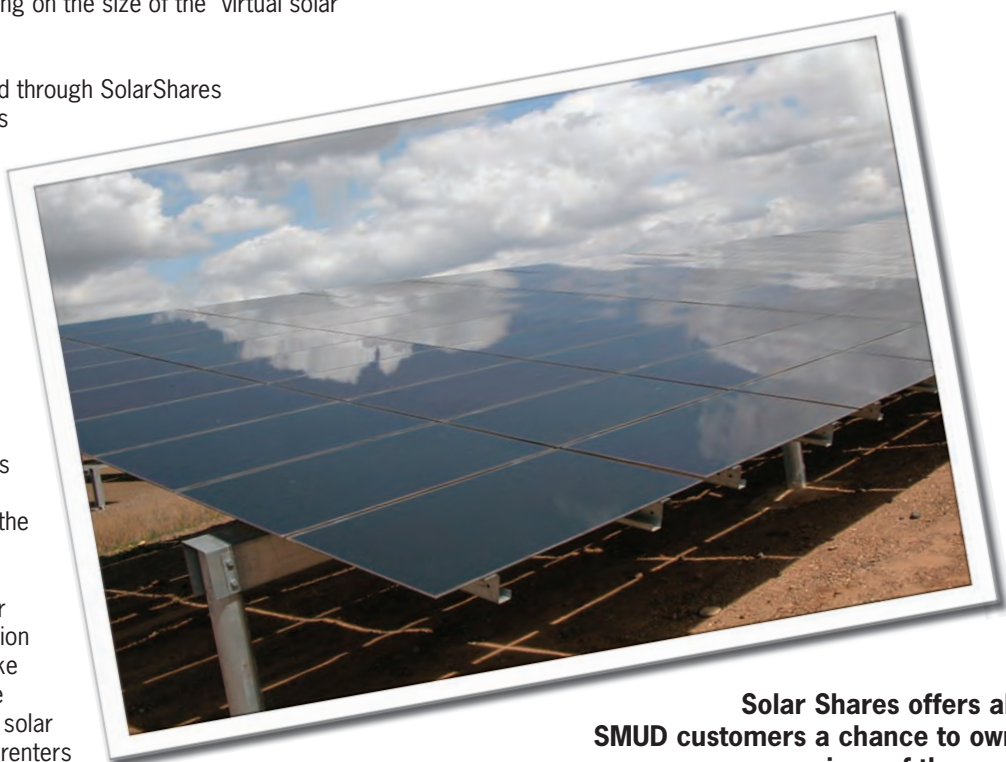
With SMUD's SolarSharesSM, residential customers, including renters and residents of multi-unit dwellings, can buy a portion of their electricity from a locally based "solar farm" for a fixed monthly price from \$4 a month up to \$50 a month, depending on the size of the "virtual solar system" purchased.

Solar power purchased through SolarShares will offset a customer's metered electricity use, and customers will see solar power credits on their bill. What's more, the rate for electricity from SolarShares will never change, even when standard electricity rates increase. And if you move, SolarShares moves with you – as long as you remain in the SMUD service area.

Factors like shading or less-than-ideal orientation relative to the sun make it impractical for some homeowners to install solar electric systems. And renters have, until now, been largely

excluded for lack of ownership. SolarShares eliminates these obstacles.

SolarShares are available on a first-come basis. Already, 70 percent of the system has been sold. To enroll, click on Your Account at www.smud.org or call **1-888-742-SMUD (7683)**. ■



Solar Shares offers all SMUD customers a chance to own a piece of the sun.

Get help, help others with programs from SMUD

SMUD customers are reaching out to help others keep their lights on during economic hard times.

Through SMUD's EnergyHELP program, customers voluntarily contribute through their monthly bill payment to any of four charities of their choosing. The donation is tax deductible, and SMUD sends 100 percent of it straight to the charity. The charity then offers as much as \$200 in bill assistance to low-income customers whose electric power has been – or is about to be – disconnected for nonpayment.

More than 10,000 SMUD customers now give in excess of \$30,000 a month to EnergyHELP. But donations are

outpaced by the growing need. To find out how you can help, visit www.smud.org, or call **1-888-742-SMUD (7683)**.

Other programs to assist SMUD customers are available, including:

Energy Assistance Program Rate (EAPR). A discount for low-income customers. For information: **1-866-675-6624**.

Medical Equipment Discount (MED) rate. For those who need an electrical device for medical reasons. For information: **1-888-742-SMUD (7683)**. ■

Contact us:

Customer Services: 1-888-742-SMUD (7683)

Hours: M-F 7 a.m. - 7 p.m. Pay online: www.smud.org



Don't toss your tree: Recycle, for free!

Bring your tree to the SMUD Corporation Yard at 1708 59th St. on Jan. 3 from 8 a.m. to 3:30 p.m. SMUD staff will mulch it for free. Please remove all tinsel, lights, tree stands and nails. Flocked trees will be accepted.

Holiday trees can also be recycled for free at the following locations:

North Area Recovery Station

4450 Roseville Road
8 a.m. to 4 p.m.
Dec. 27 and Jan. 3

Kiefer Landfill

12701 Kiefer Blvd.
8 a.m. to 4 p.m.
Dec. 27 and Jan. 3

Elder Creek Recovery and Transfer

8642 Elder Creek Road
8 a.m. to 3 p.m.
Dec. 27 and Jan. 3
Also Dec. 26 – Jan. 31,
Monday through Saturday, 8 a.m. to 3 p.m.

Sacramento Recycling and Transfer Station

8491 Fruitridge Road
8 a.m. to 5 p.m.
Dec. 27 and Jan. 3
Also Dec. 26 – Jan. 31, Monday through
Saturday, 8 a.m. to 5 p.m.

Folsom -- Dan Russell Rodeo Arena (Stafford and Natoma)

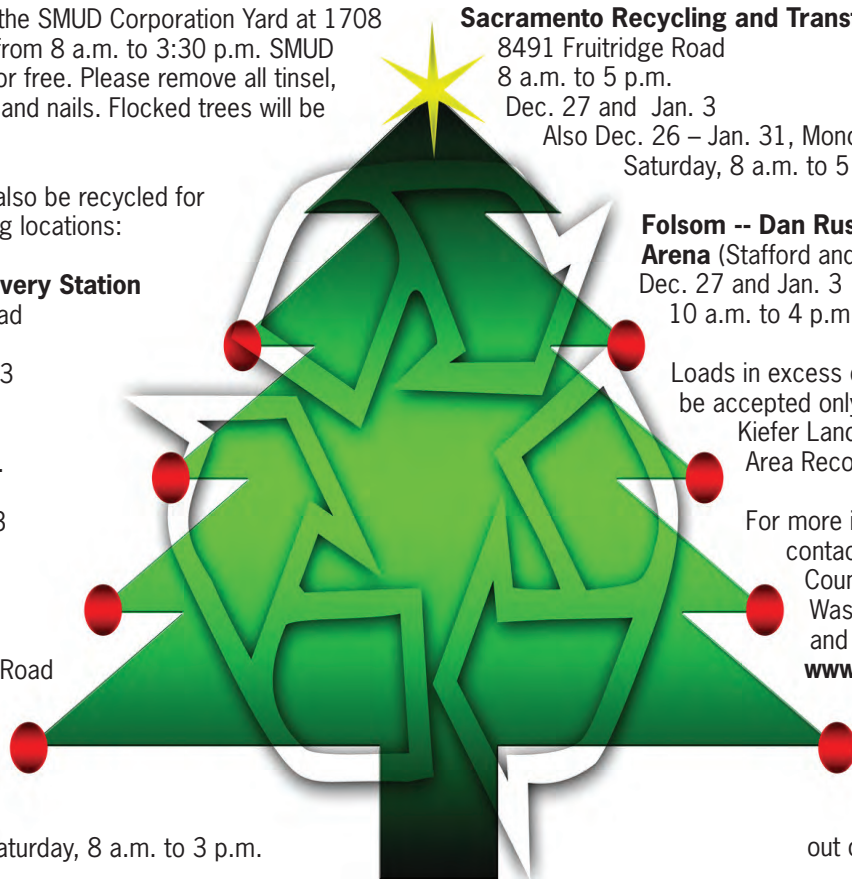
Dec. 27 and Jan. 3
10 a.m. to 4 p.m.

Loads in excess of five trees will be accepted only at Elder Creek, Kiefer Landfill and the North Area Recovery Station.

For more information, contact the Sacramento County Department of Waste Management and Recycling. Visit www.sacgreenteam.com or call

916-875-6789.

Keep your tree out of the landfill! ■



Be careful with heating the home

With the onset of cooler weather, SMUD reminds customers to be safe when heating their homes or when cooking. Unventilated heat sources release carbon monoxide – a deadly, odorless gas – into the home, and can kill people in minutes.

Never use a propane heater, hibachi or barbecue to heat your home.

Never use an unventilated fire or burn charcoal indoors.

Never use lighter fluid or gasoline to start a fire, nor burn painted or treated wood in the fireplace. ■

Comparing power content

The table at right compares the power generation sources for SMUD customers to those for all California electricity customers. ■

POWER CONTENT LABEL		
ENERGY RESOURCES	2008 SMUD Power Mix* (projected)	2007 CA Power Mix* (for comparison)
Eligible Renewable	20%	10%
– Biomass & waste	7%	<1%
– Geothermal	4%	2%
– Small Hydroelectric	2%	6%
– Solar	<1%	<1%
– Wind	6%	2%
Coal	1%	32%
Large Hydroelectric	17%	24%
Natural Gas	62%	31%
Nuclear	<1%	3%
Other	0%	0%
TOTAL	100%	100%

* 95% of SMUD's 2008 POWER MIX is from SMUD-owned resources or specifically purchased from individual suppliers.

** Percentages are estimated annually by the California Energy Commission based on electricity sold to California consumers during the previous year.

For specific information about this electricity product, contact SMUD. For general information about the Power Content Label, contact the California Energy Commission at 1-800-555-7794 or www.energy.ca.gov/consumer/power_content_label.html.

SMUD Board of Directors

Larry Carr
President • Ward 6

Howard Posner
Vice President • Ward 3

Renee Nunes Taylor • Ward 1
Susan Patterson • Ward 2

Genevieve Shiroma • Ward 4

Peter Keat • Ward 5

Bill Slaton • Ward 7

Meetings of the SMUD Board of Directors are open to the public and held on every first Thursday of the month at 6 p.m. and every third Thursday of the month at 9 a.m. in the SMUD Headquarters Auditorium, 6201 S St., Sacramento. Meeting times and locations are subject to change. For the latest information and agenda, visit www.smud.org, or call the Board Office at (916) 732-6155.